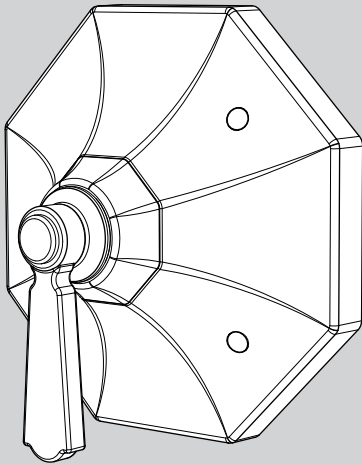


INSTRUCTIONS FOR MODELS

CPT-16000



NEED HELP?

For additional assistance or service please contact:

SPEAKMAN®

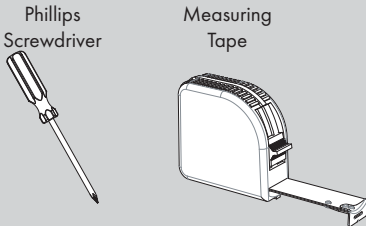
800-537-2107

customerservice@speakman.com

www.speakman.com

92-CPT-16000-04

TOOLS AND SUPPLIES



IMPORTANT



- Do not over-tighten any connections or damage may occur.
- Be sure to read instructions thoroughly before beginning installation.

SAFETY TIPS

Cover your drain to prevent loss of parts.

MAINTENANCE

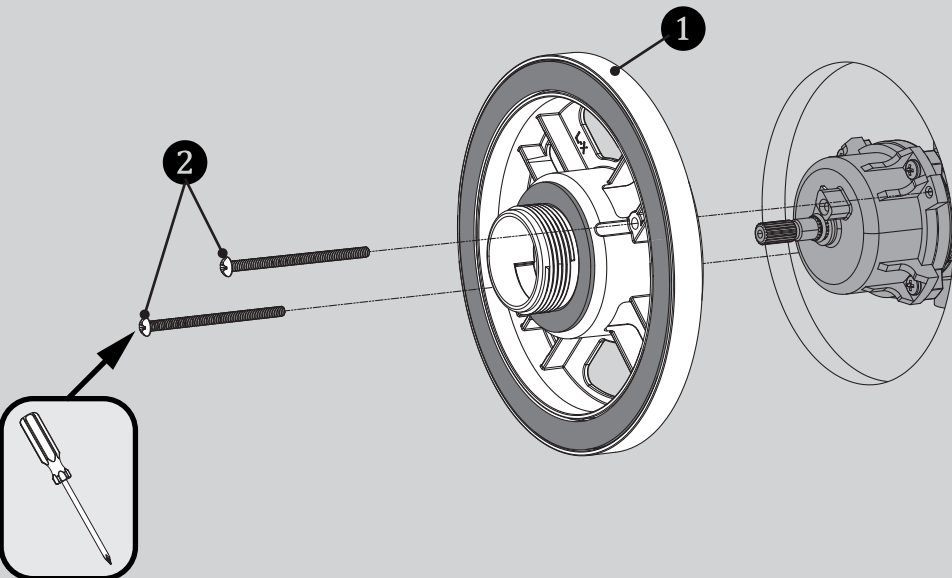
Your new Speakman Product is designed for years of trouble-free performance. Keep it looking new by cleaning it periodically with a soft cloth. The use of harsh chemicals and abrasives on any of the Speakman custom finish products may damage the finish and void the product warranty. Please be sure to only use approved cleaners. Please contact Speakman for any clarification of acceptable cleaners.

WARRANTY

Warranty information can be found at:
www.speakman.com

1

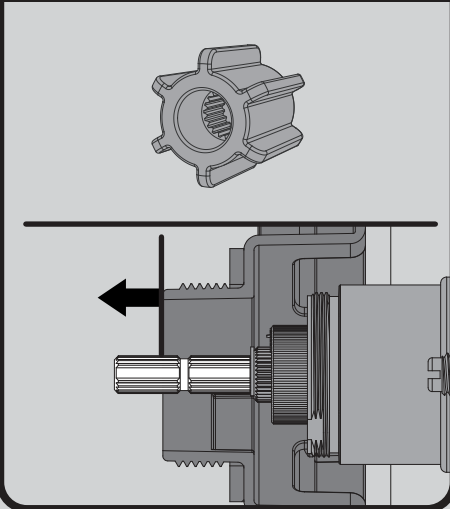
Clean wall surface. Place Mounting Base (1) onto the valve, align mounting holes, and secure with supplied screws (2).



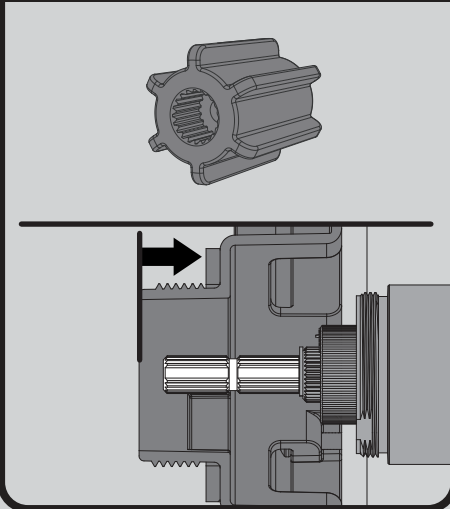
2

Verify the position of the Spindle within the Mounting Plate, as shown below. If the end of the Spindle extends beyond the Mounting Plate, then use the Shallow Mount Adapter. If the end of the Spindle is flush to, or is within the Mounting Plate, then use the Deep Mount Adapter.

FOR SHALLOW MOUNT APPLICATION

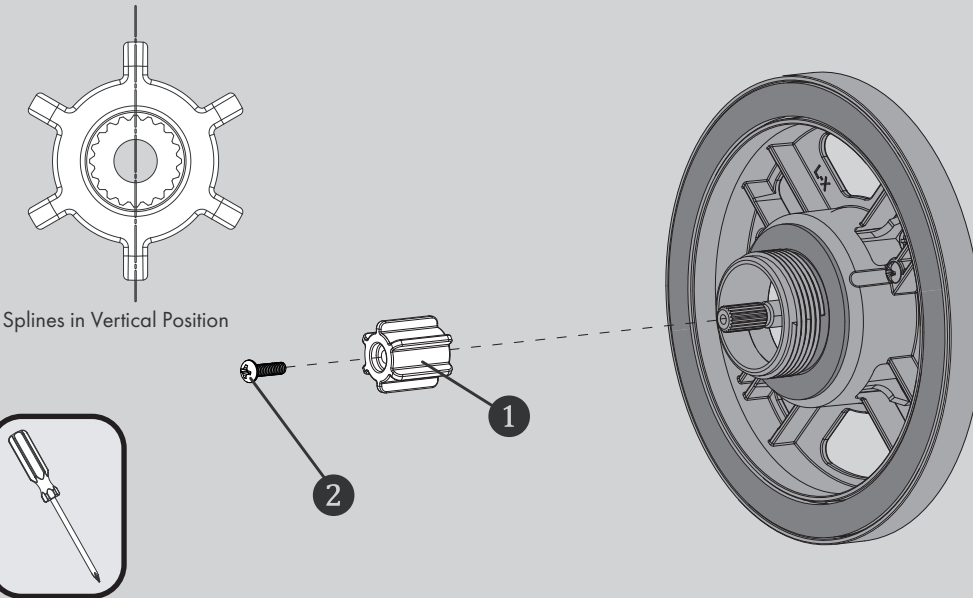


FOR DEEP MOUNT APPLICATION



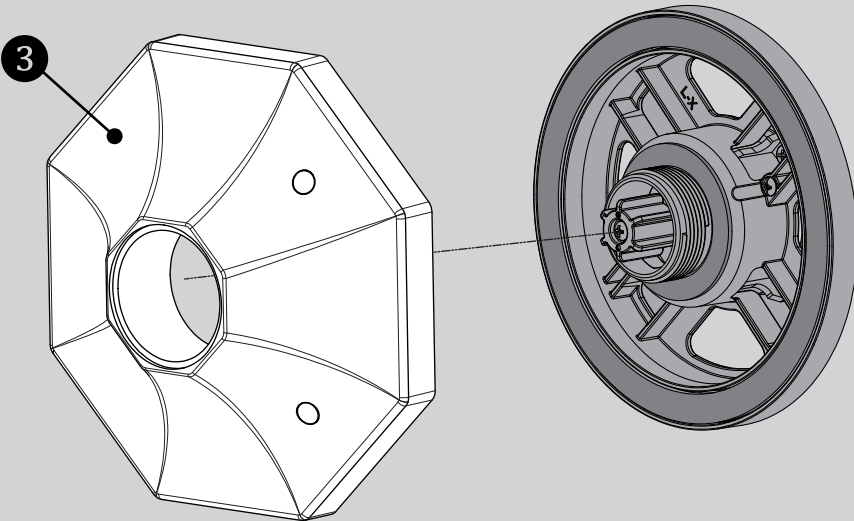
3

Confirm that Valve is in the "Off" position. Place appropriate Connector (1) on to the Spindle of the Valve, making sure to orient the Connector so that one set of Splines are in a perfectly vertical position. Secure Connector with 8-32 screw provided (2).



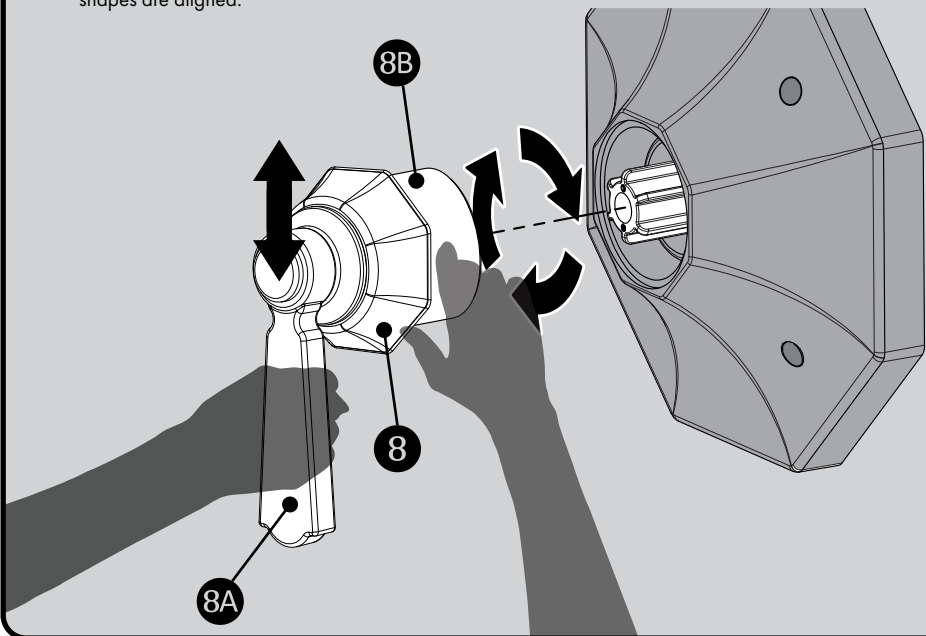
4

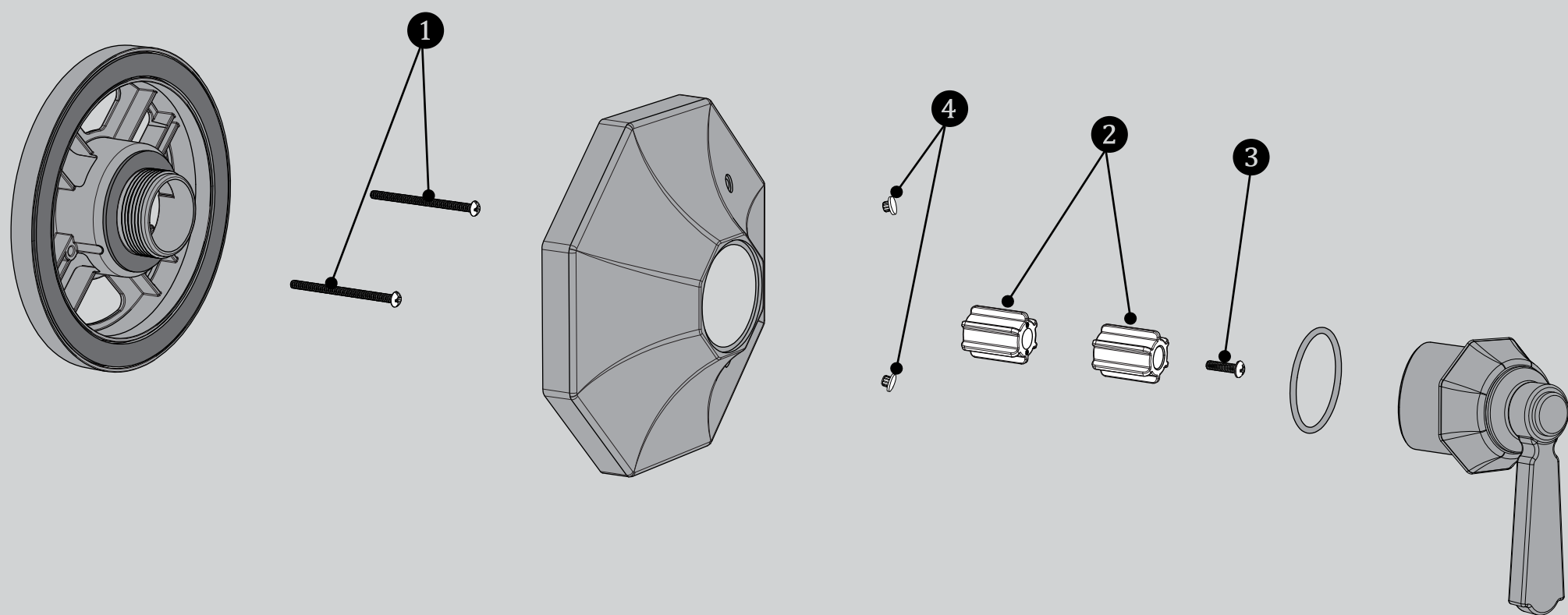
Place Escutcheon (3) onto Mounting Base. Take care to align the Escutcheon as shown below.



5

Align Handle Assembly (8) with Connector and Escutcheon. Keep Handle (8A) in a stationary vertical position as you thread Handle Hub (8B) onto the Mounting Base. Tighten until snug and the octagonal shapes are aligned.

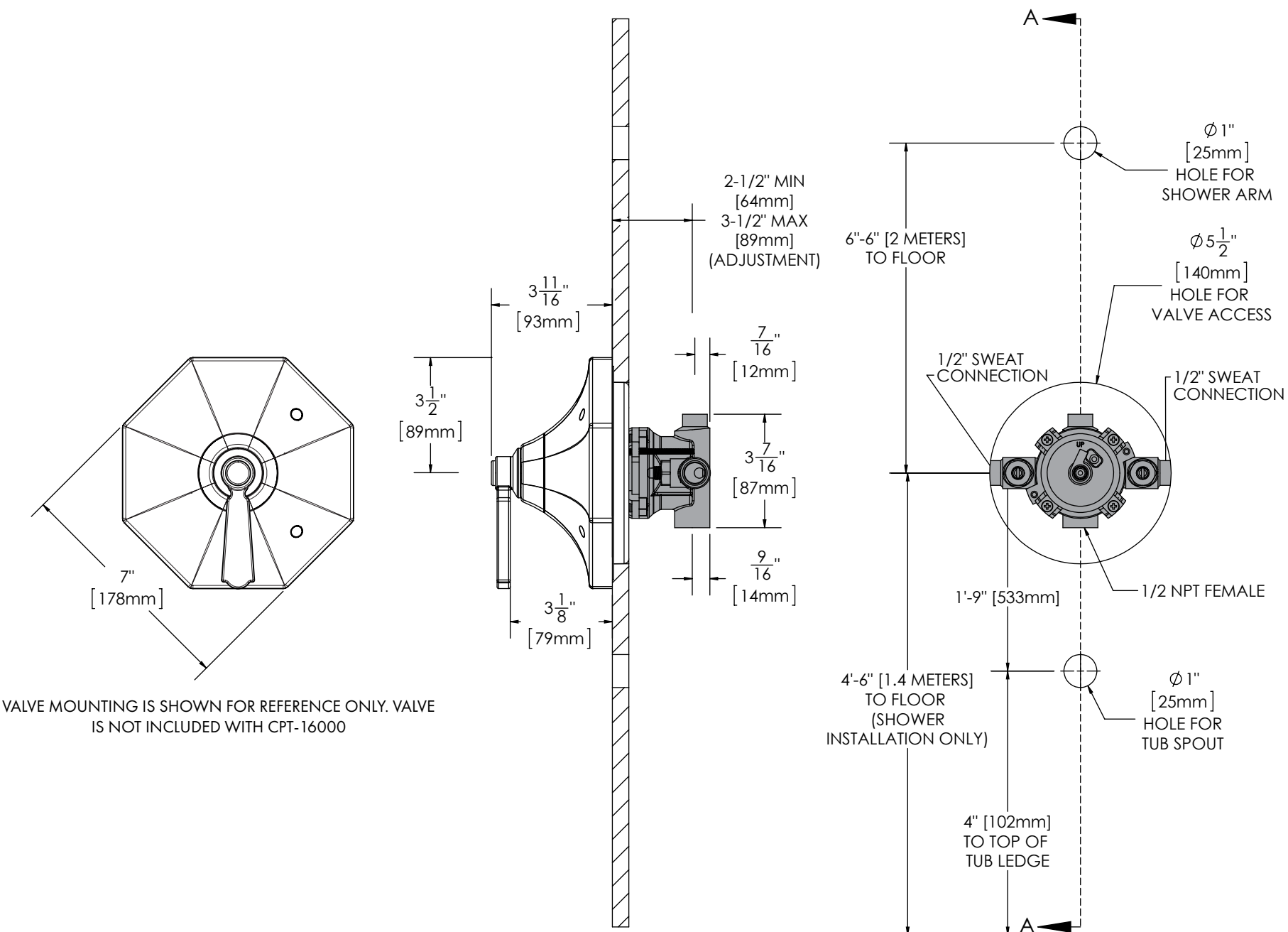




ITEM NO.	PART NO.	DESCRIPTION
1 2 3	RPG05-0874	ASSEMBLY SCREWS AND ADAPTERS
4	RPG05-0961	HOT/COLD INDICATOR BUTTONS

ADA Compliant 

CPT-16000 ROUGH-IN DIAGRAM



VALVE MOUNTING IS SHOWN FOR REFERENCE ONLY. VALVE IS NOT INCLUDED WITH CPT-16000

DIMENSIONS SUBJECT TO CHANGE WITHOUT NOTICE.