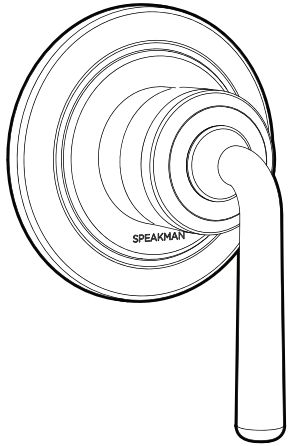


INSTALLATION INSTRUCTIONS

Transfer Valve Trim



IMPORTANT

SAFETY TIPS:

Be sure to read and understand all instructions before beginning installation.

Cover the drain to avoid loss of parts.

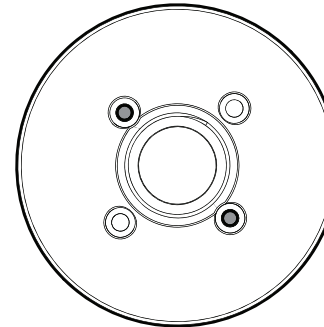
Do NOT over tighten any connections or damage may occur.

Observe all local plumbing and building codes.

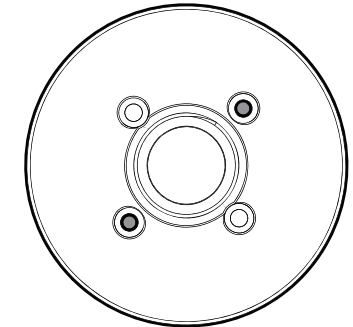
The Transfer Valve has an optimal operating range of 20-80 psi

DETERMINE MOUNTING HOLES

- 1 The included Mounting Plate has two sets of mounting holes. The inboard mounting holes are for use with earlier 2-Way Transfer Valves. The outboard mounting holes are for use with 3-Way Transfer Valves.



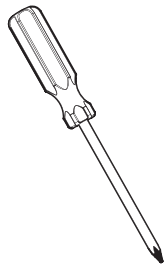
FOR USE WITH
EARLIER 2-WAY
TRANSFER VALVES



FOR USE WITH
3-WAY
TRANSFER VALVES

TOOLS & SUPPLIES NEEDED

Phillips Screwdriver



MAINTENANCE

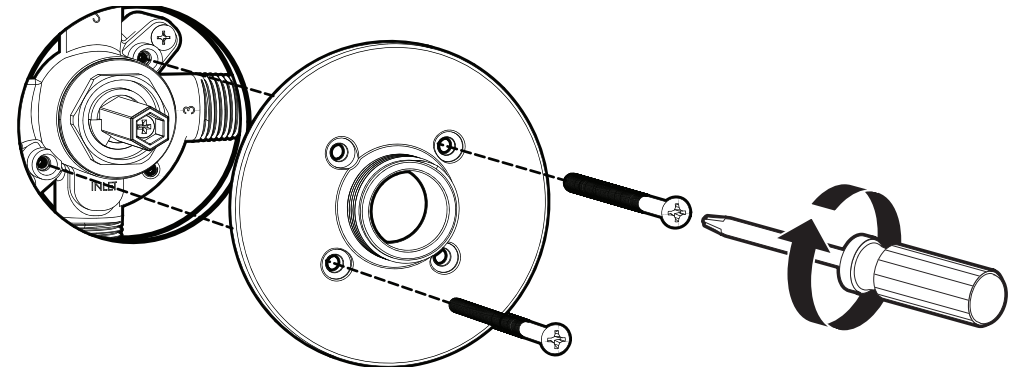
Periodic cleaning using a mild soap and warm water will help keep your product's appearance in its original condition.

For best results, dry immediately with a soft, clean cloth. **DO NOT USE** harsh and/or abrasive cleaners.

To help restore the finish, occasionally apply a non-abrasive wax to your product (follow manufacturers' instructions).

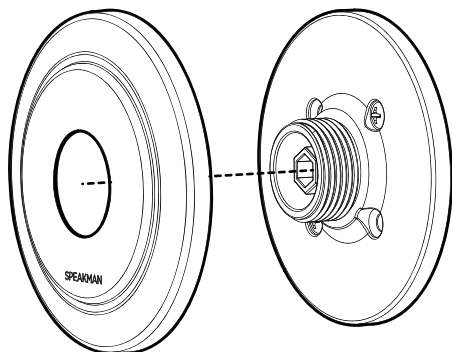
SECURE MOUNTING PLATE

- 2 Secure the Mounting Plate to the Transfer Valve using the included Mounting Screws.



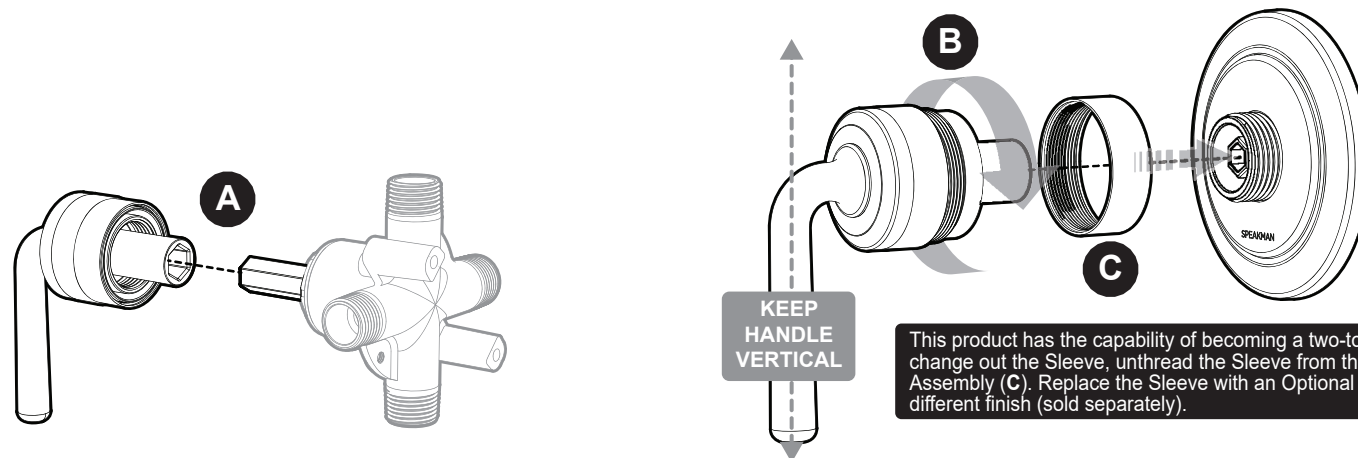
POSITION WALL PLATE

- 3 Position the Wall Plate over the Mounting Plate as shown below.



SECURE HANDLE AND WALL PLATE

- 4 Align the Hex Drive Spindle of the Transfer Valve to the Hex pocket of the Handle Assembly with the Handle in a vertical position (A). Keep the Handle in a vertical position as you thread the Handle Hub (B) onto the Mounting Plate. Verify proper alignment of the Wall Plate. Tighten Handle Hub into final position.



PRODUCT WARRANTY

For additional information please go to www.speakman.com.

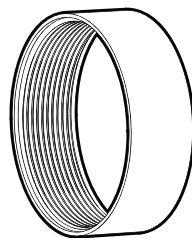
CALIFORNIA PROPOSITION 65



CALIFORNIA PROPOSITION 65:

WARNING: This product can expose you to chemicals including lead, which is known to the State of California to cause cancer and birth defects or other reproductive harm. For more information go to www.P65Warnings.ca.gov. Wash hands after installation, repair, or removal of this product.

REPAIR PARTS

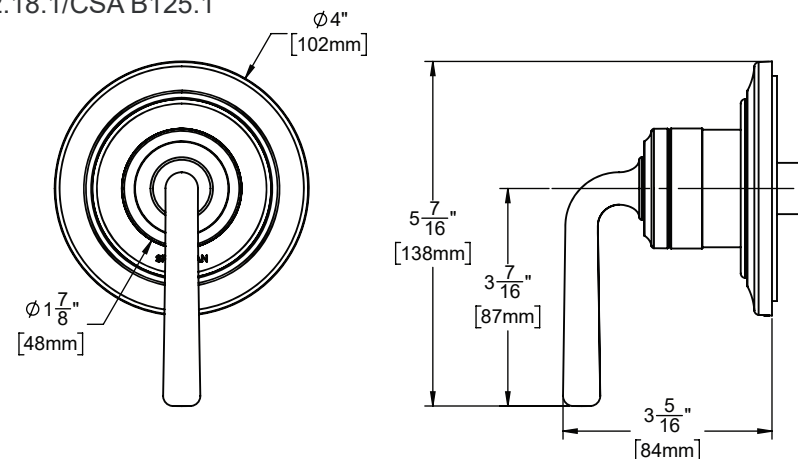


A-TVT-XX
FINISH SLEEVE
(XX = FINISH)

ROUGH IN DIAGRAM

COMPLIANCE:

ASME A112.18.1/CSA B125.1



NEED HELP?

For additional assistance or service please contact:



800-537-2107



customerservice@spekman.com



www.speakman.com