

Commercial Brass Showerhead

MODELS:

- S-2460: 2.5 GPM (9.5 L/min) flow rate
- S-2460-E175: 1.75 GPM (6.6 L/min) flow rate
- S-2460-E2: 2.0 GPM (7.6 L/min) flow rate

FEATURES:

- Vandal-resistant standard
- ½ in. NPT inlet
- Solid brass wall mounted showerhead
- 2 in. face 60 spray channels at three different angles to allow a full coverage shower
- Drilled for, but less mounting bolts
- Water conserving pressure compensating Autoflo® device reduces flow to a maximum of 2.5 gpm (9.46 L/min) flow rate
- Ligature-resistant, accepted by OMH

STOCK FINISH:



PC

OPTIONS/ADD-ONS:

- AP: Anchor plate assembly with mounting screws

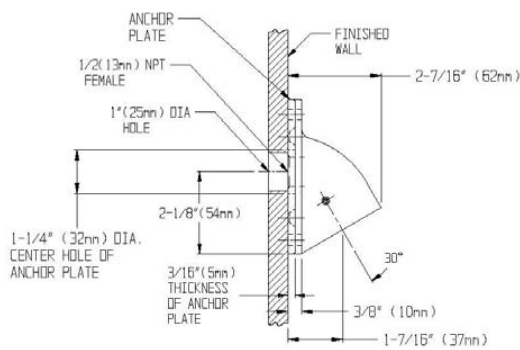
STANDARDS:

- ASME A112.18.1/CSA B125.1 standard

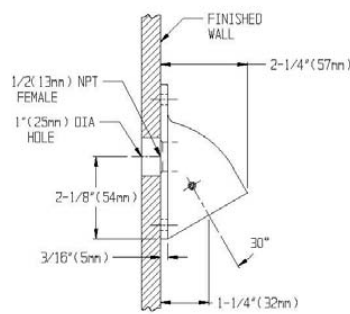
WARRANTY:

Visit www.speakman.com for full product warranty information

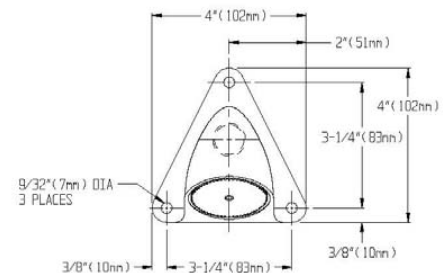
- 5 Year Limited Warranty (commercial)



S-2460-AP



S-2460



All dimensions are in inches (millimeters) unless otherwise specified and are subject to change without notice.

Architect/Engineer Approval Space:

P: 800-537-2107

F: 800-977-2747

W: WWW.SPEAKMAN.COM

R: 04-AUGUST 2024