

## Commercial Brass Showerhead

### MODEL:

- S-2460: 2.5 GPM (9.5 L/min) flow rate

### FEATURES:

- Vandal-resistant standard
- ½ in. NPT inlet
- Solid brass wall mounted showerhead
- 2 in. face 60 spray channels at three different angles to allow a full coverage shower
- Drilled for, but less mounting bolts
- Water conserving pressure compensating Autoflo® device reduces flow to a maximum of 2.5 gpm (9.46 L/min) flow rate
- Ligature-resistant, accepted by OMH

### STOCK FINISH:



PC

### OPTIONS/ADD-ONS:

- AP: Anchor plate assmbly with mounting screws

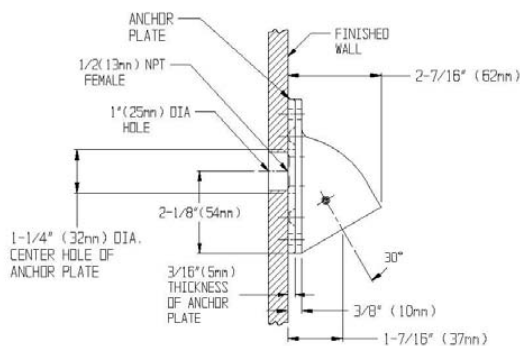
### STANDARDS:

- ASME A112.18.1/CSA B125.1 standard

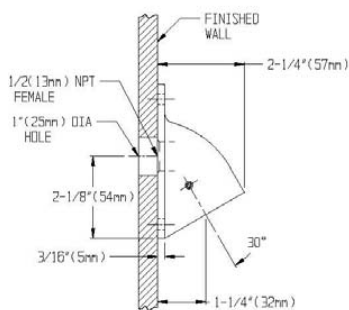
### WARRANTY:

Visit [www.speakman.com](http://www.speakman.com) for full product warranty information

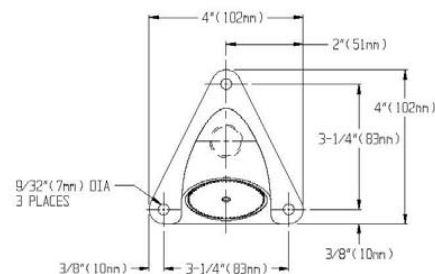
- 5 Year Limited Warranty (commercial)



S-2460-AP



S-2460



All dimensions are in inches (millimeters) unless otherwise specified and are subject to change without notice.

Architect/Engineer Approval Space:

P: 800-537-2107  
F: 800-977-2747  
W: [WWW.SPEAKMAN.COM](http://WWW.SPEAKMAN.COM)  
R: 03-AUGUST 2023