

## Lura® Single Lever Faucet

### FEATURES:

---

- Aerated waterfall outlet
- Brass construction
- Lever handle
- Ceramic cartridge
- 1.2 gpm (4.5 L/min)
- 9/16"-24 (3/8 compression) connection
- Corrosion resistant finishes
- Coordinates with Lura Collection
- Includes finish-matched drain

### STOCK FINISHES:

---



PC MB BBZ

### STANDARDS:

---

- ASME A112.18.1/CSA B125.1 certified
- NSF/ANSI 61 certified
- NSF 372 certified
- WaterSense certified
- ADA compliant

### WARRANTY:

---

Visit [www.speakman.com](http://www.speakman.com) for full product warranty information

- 5 Year Limited Warranty (commercial)
- Limited Lifetime Warranty (residential)



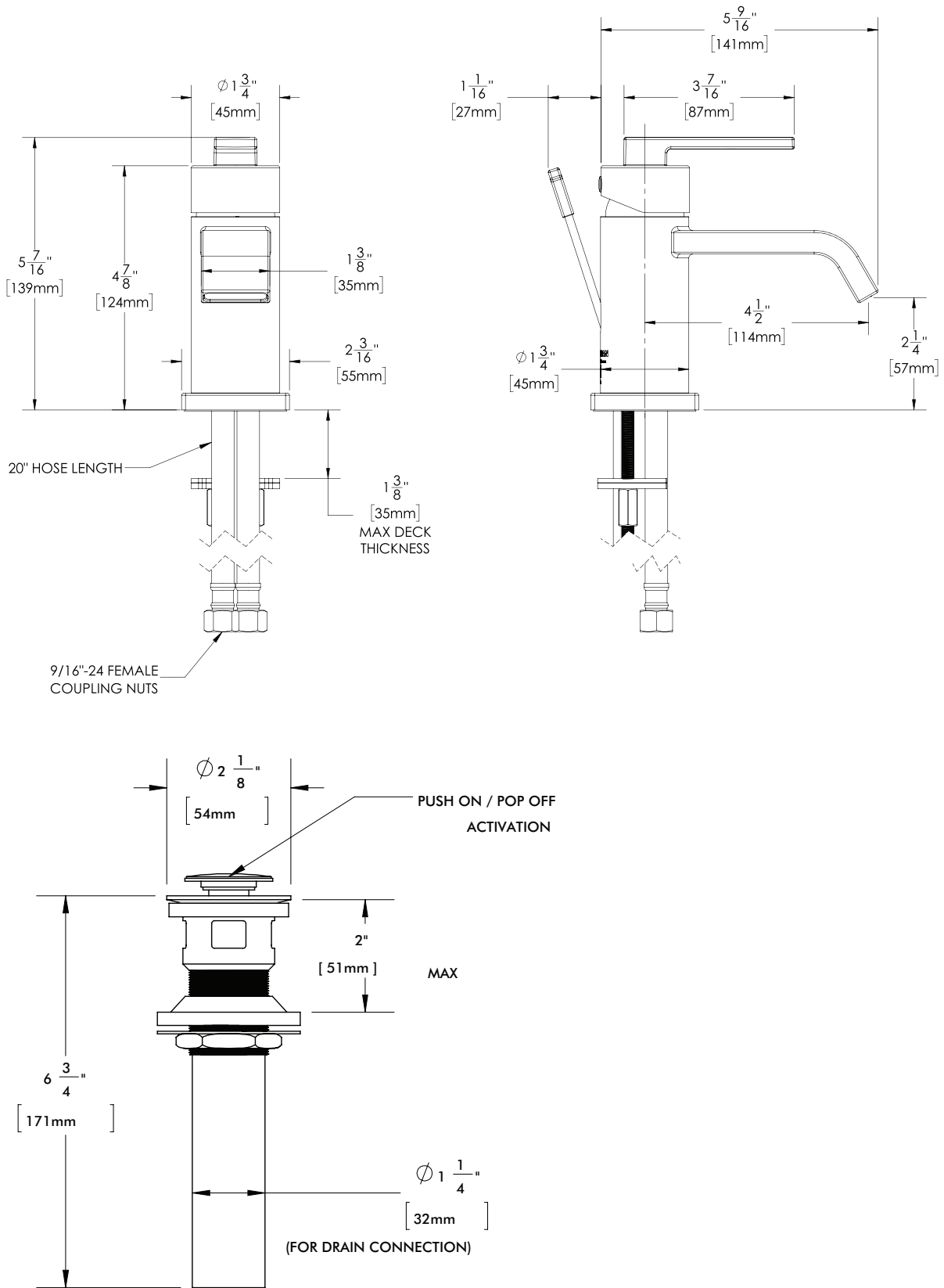
Information continues on next page

All dimensions are in inches (millimeters) unless otherwise specified and are subject to change without notice.

Architect/Engineer Approval Space:

P: 800-537-2107  
F: 800-977-2747  
W: [WWW.SPEAKMAN.COM](http://WWW.SPEAKMAN.COM)  
R: 02-MAY 2022

## Lura® Single Lever Faucet



All dimensions are in inches (millimeters) unless otherwise specified and are subject to change without notice.

Architect/Engineer Approval Space:

P: 800-537-2107  
 F: 800-977-2747  
 W: WWW.SPEAKMAN.COM  
 R: 02-MAY 2022