

Lura® Single Lever Vessel Faucet

FEATURES:

- Aerated waterfall outlet 9-15/16" from base to spout
- Brass construction
- Lever handle
- Ceramic cartridge
- 1.2 gpm (4.5 L/min)
- 9/16"-24 (3/8 compression) supply connection
- Corrosion resistant finishes
- Coordinates with Lura Collection
- Water supply lines included
- Includes finish-matched push-pop drain

STOCK FINISHES:



PC MB BBZ

STANDARDS:

- ASME A112.18.1/CSA B125.1 certified
- NSF/ANSI 61 certified
- NSF 372 certified
- WaterSense certified
- ADA compliant

WARRANTY:

Visit www.speakman.com for full product warranty information

- 5 Year Limited Warranty (commercial)
- Limited Lifetime Warranty (residential)



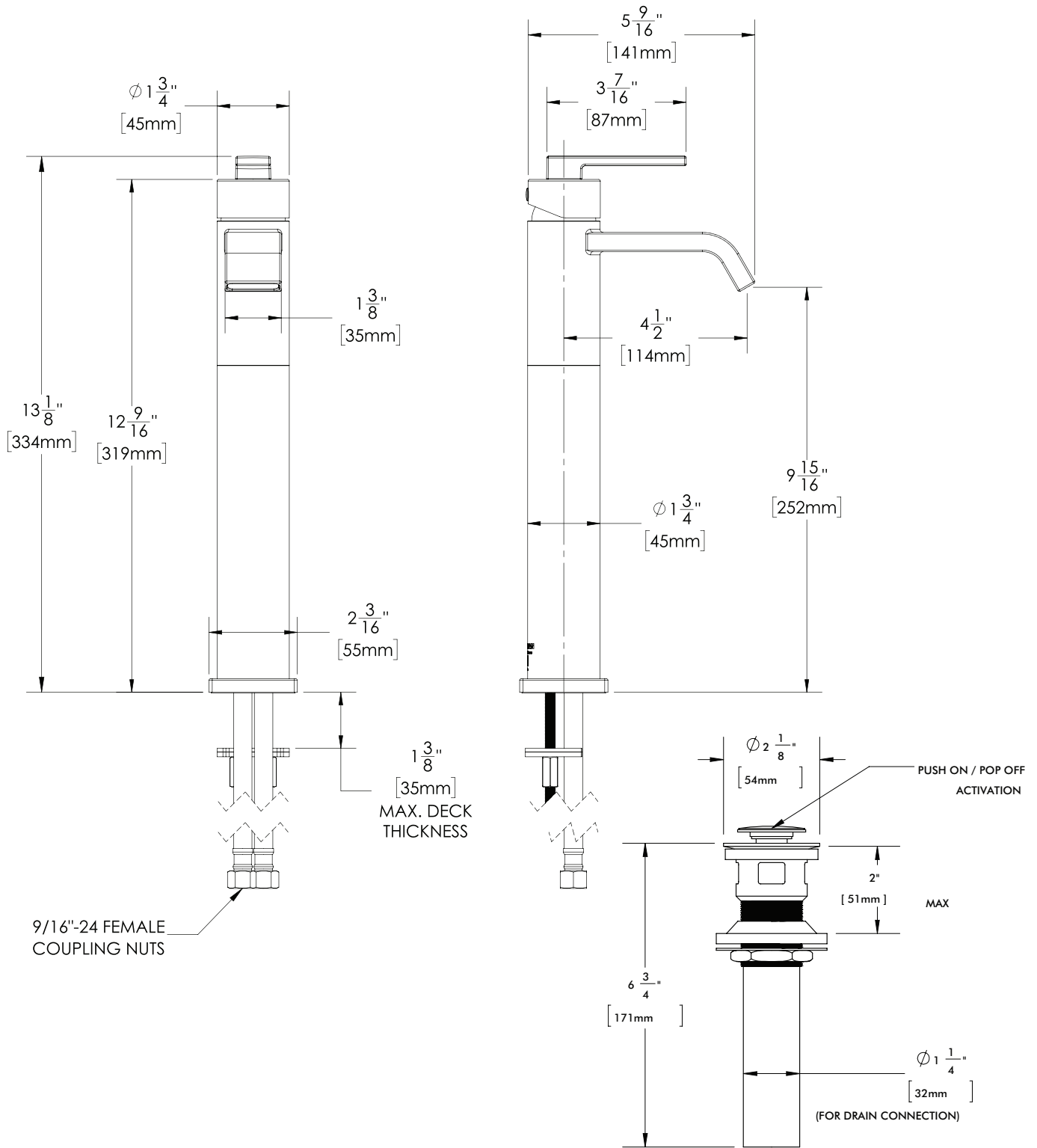
Information continues on next page

All dimensions are in inches (millimeters) unless otherwise specified and are subject to change without notice.

Architect/Engineer Approval Space:

P: 800-537-2107
F: 800-977-2747
W: WWW.SPEAKMAN.COM
R: 02-MAY 2022

Lura® Single Lever Vessel Faucet



All dimensions are in inches (millimeters) unless otherwise specified and are subject to change without notice.

Architect/Engineer Approval Space:

P: 800-537-2107
 F: 800-977-2747
 W: WWW.SPEAKMAN.COM
 R: 02-MAY 2022