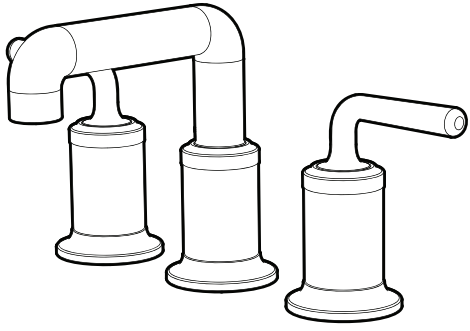
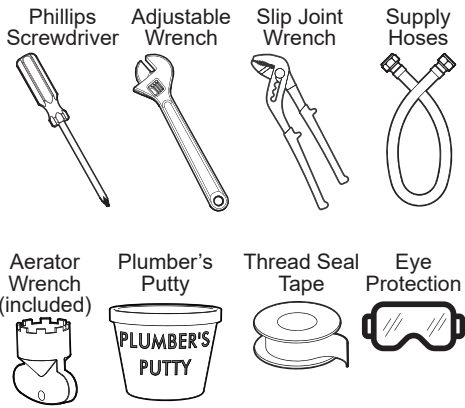


INSTALLATION INSTRUCTIONS

SB-4621 Widespread Faucet



TOOLS & SUPPLIES NEEDED



IMPORTANT

SAFETY TIPS:

Be sure to read and understand all instructions before beginning installation.
Inspect all connections after installation.
Cover the drain to avoid loss of parts.
Be sure to wear proper eye protection.
Do NOT over tighten any connections or damage may occur.
Shut OFF water supplies before beginning installation.
Observe all local plumbing and building codes.

FAUCET SPECIFICATIONS:

This Faucet has an operating range of 20-80 psi.

FINISH MAINTENANCE:

Your new product is designed for years of trouble-free performance. Keep it looking new by cleaning it periodically with a soft cloth. Avoid abrasive cleaners, steel wool, and harsh chemicals as these will dull the finish and void your warranty.

PRODUCT WARRANTY

Warranty Information Can Be Found At
www.speakman.com

CALIFORNIA PROPOSITION 65

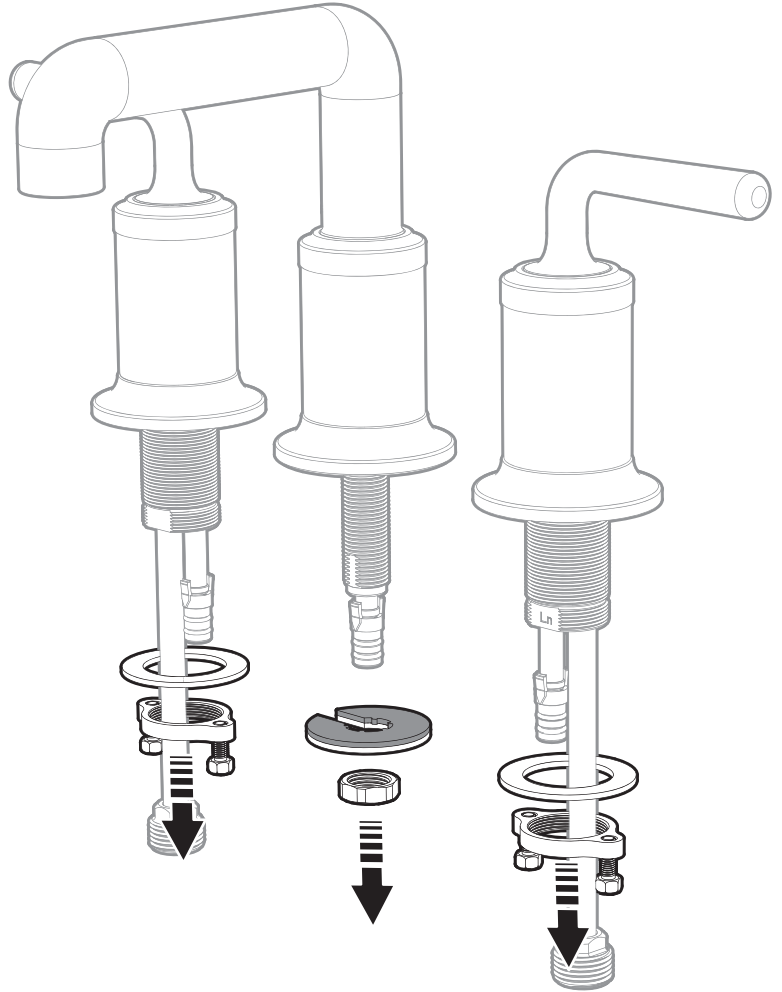


CALIFORNIA PROPOSITION 65:

WARNING: This product can expose you to chemicals including lead, which is known to the State of California to cause cancer and birth defects or other reproductive harm. For more information go to www.P65Warnings.ca.gov. Wash hands after installation, repair, or removal of this product.

PREPARE FOR MOUNTING

- 1 Remove Mounting Nuts and Mounting Washers from Handle Assemblies and Spout Assembly.



NEED HELP?

For additional assistance or service please contact:



800-537-2107

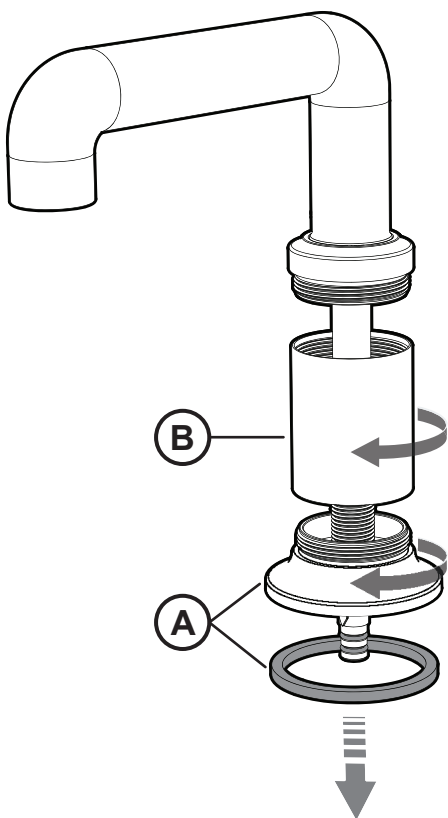


www.speakman.com

92-SB-4621-02

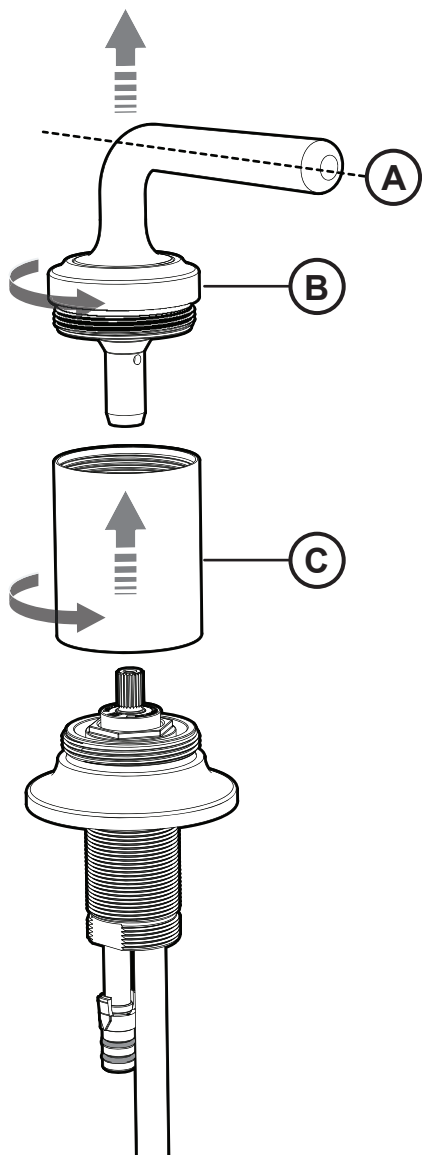
OPTIONAL SLEEVE INSTALL

- 2 This Faucet has the capability of becoming a two-tone product. To change out the Finish Sleeve of the Spout Assembly, unthread the Base Flange (A). Unthread and replace the Sleeve with the optional Sleeve of a different finish (B). Reinstall removed components.



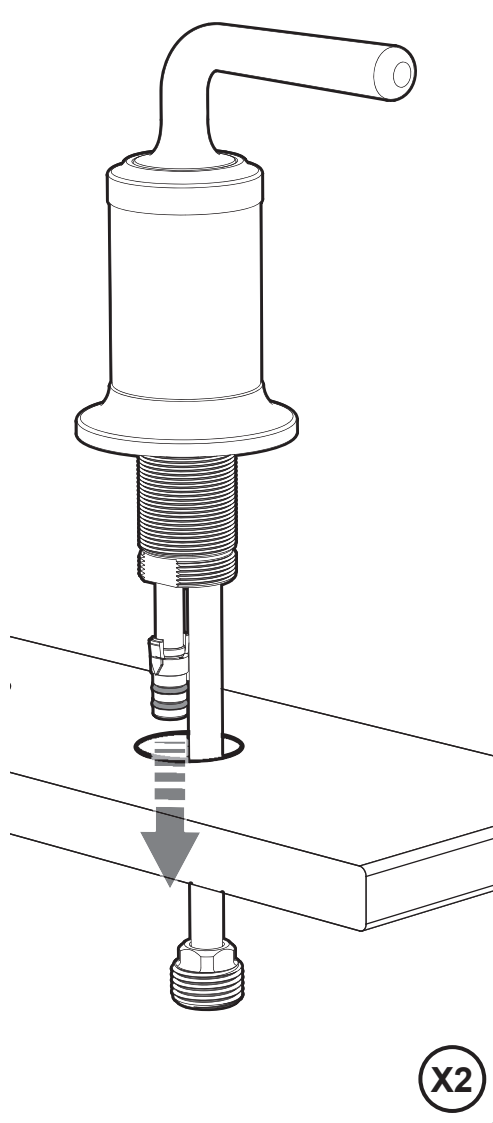
OPTIONAL SLEEVE INSTALL

- 3 This Faucet has the capability of becoming a two-tone product. To change out the Finish Sleeve of the Handle Assembly, hold the Handle in a stationary position (A). Unthread the Handle Hub (B). Unthread and replace the Sleeve with the optional Sleeve of a different finish (C). Reinstall removed components while properly aligning Handle to the original position.



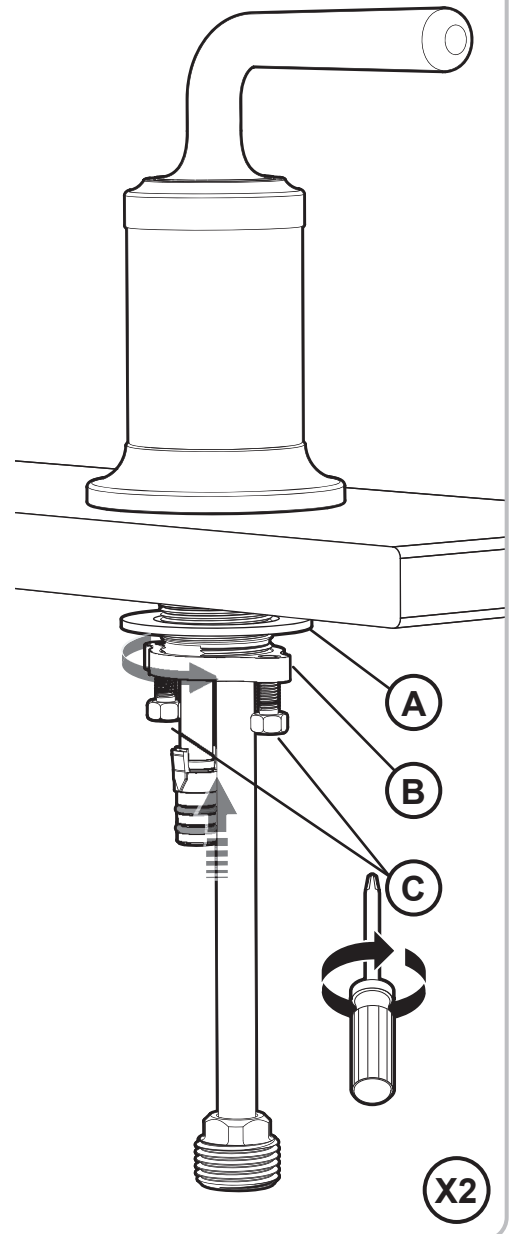
INSTALL HANDLE ASSEMBLIES

- 4 Install COLD Handle Assembly through mounting hole and align the Handle to the "OFF" position. Repeat process for the HOT Handle Assembly.



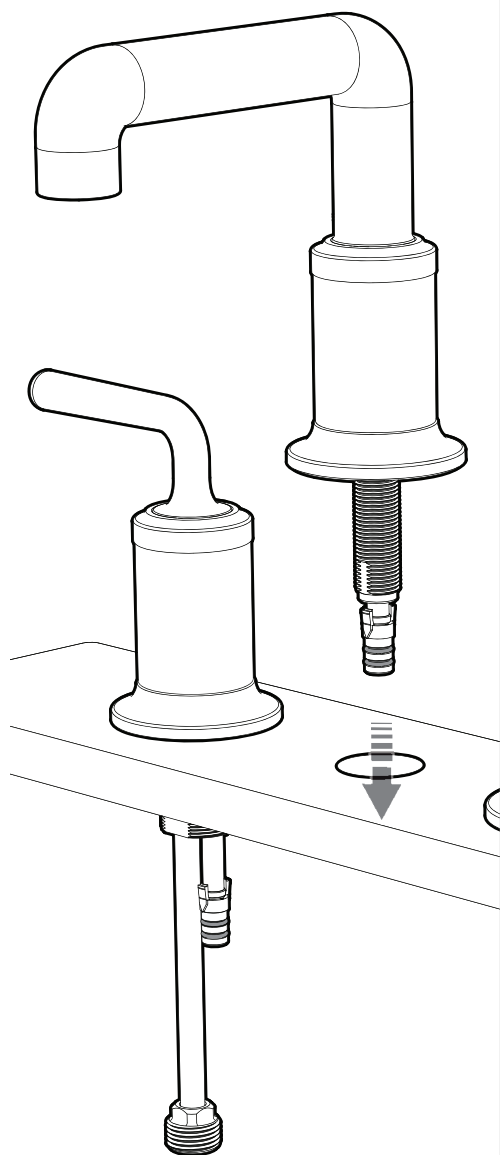
SECURE HANDLE ASSEMBLIES

- 5 From below, install Washer (A), and Mounting Nut (B). Align Handle to the desired "OFF" position and tighten Screws within Mounting Nut (C) for final securement. Repeat process for the HOT Handle Assembly.



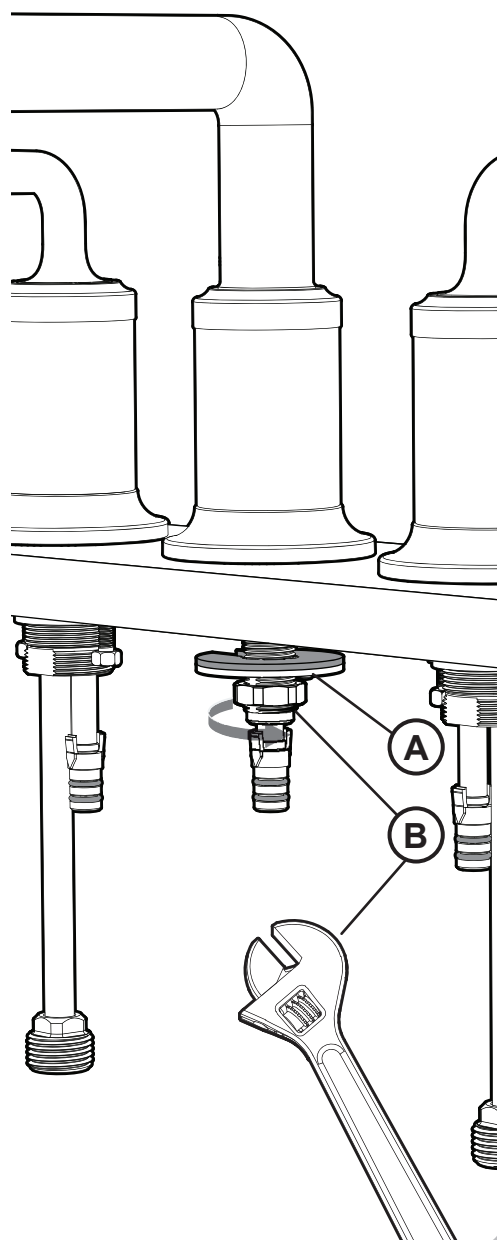
INSTALL SPOUT

- 6 Install Spout Assembly through mounting hole.



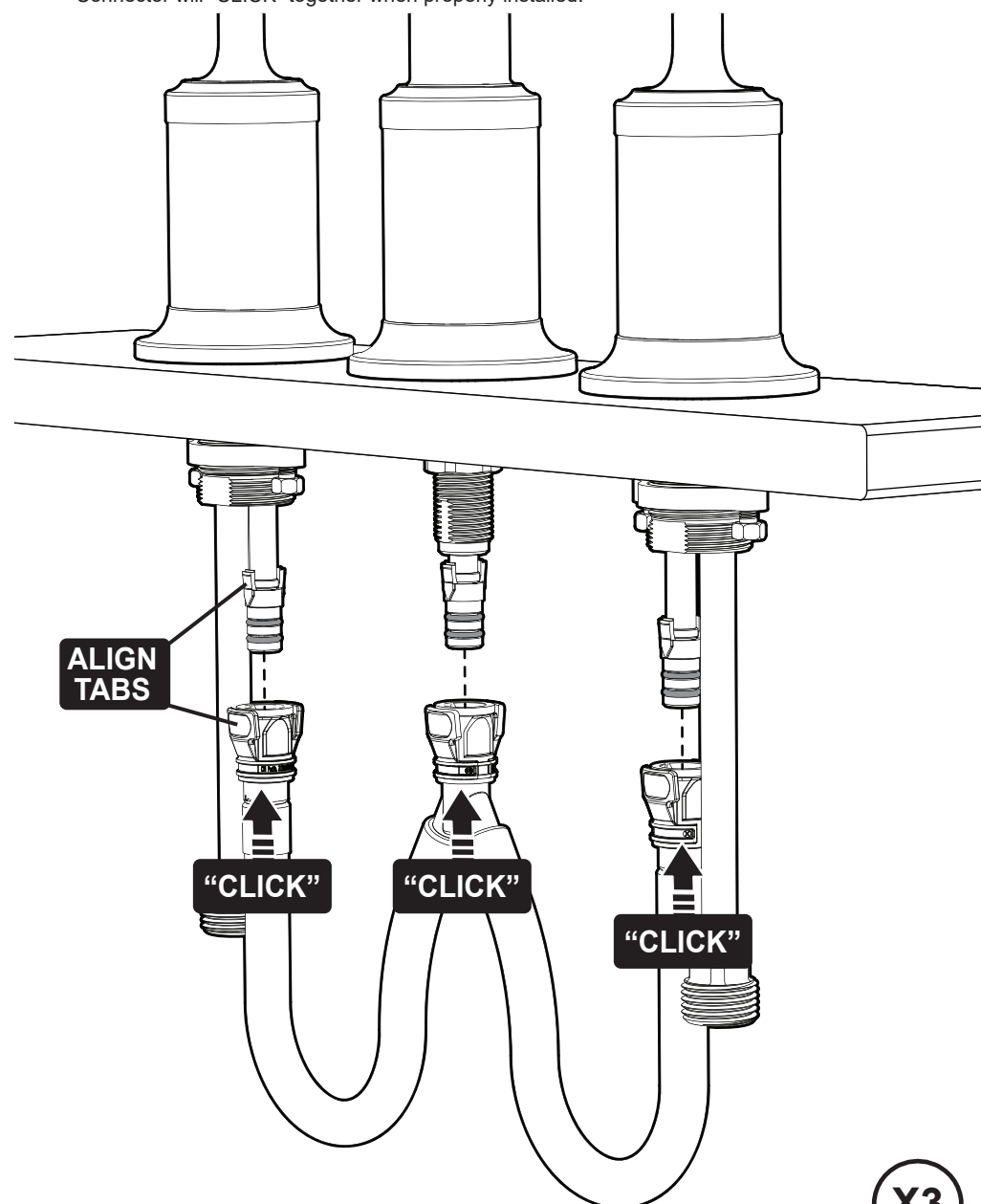
SECURE SPOUT

- 7 From below, install Washer (A), and Mounting Nut (B). Align Spout and tighten Mounting Nut to secure into position.



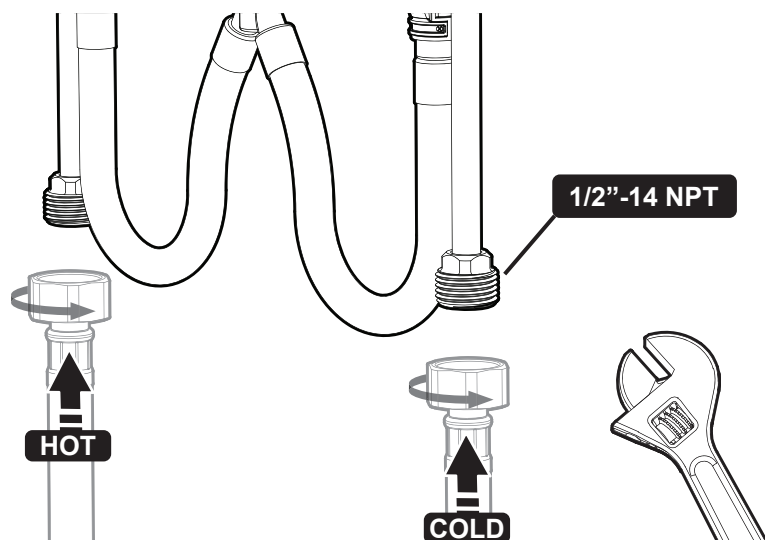
INSTALL HOSE CONNECTORS

- 4 From below, install the Hose Connector to the Spout and Handle Assemblies. Align the Hose Connector to the corresponding Tab and press onto the Stem with double o-rings. The Hose Connector will "CLICK" together when properly installed.



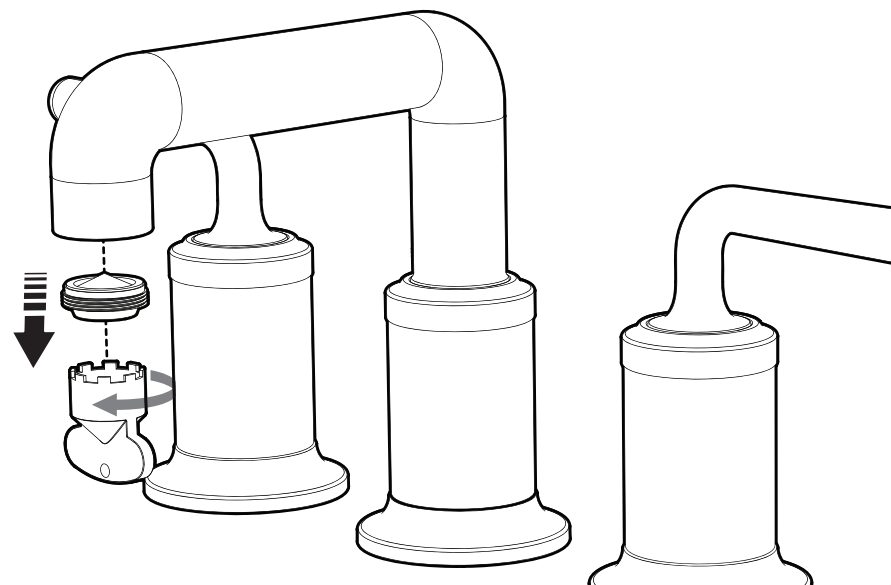
CONNECT TO WATER SUPPLIES

- 9 Make connections to the water supplies. The "COLD" inlet is on the right Handle Assembly, and the "HOT" inlet is on the left Handle Assembly. Inlet Size is 1/2"-14 NPT. Inlet Supplies are not included. Secure with an Adjustable Wrench.



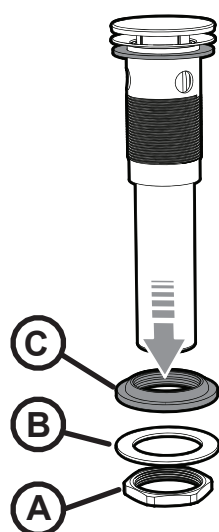
REMOVE AERATOR

- 10 Remove Aerator from Faucet Spout using the included Aerator Wrench.



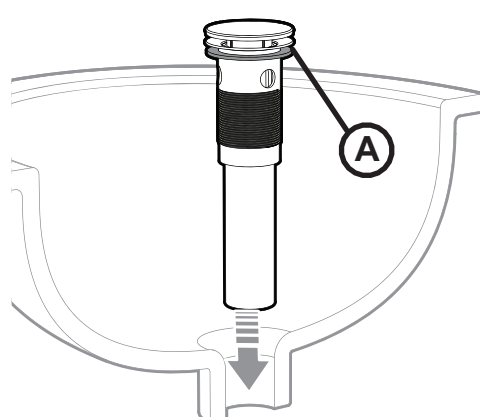
PREPARE DRAIN

- 11 Remove Mounting Nut (A), Metal Washer (B), and Sealing Washer (C) from Drain Assembly.



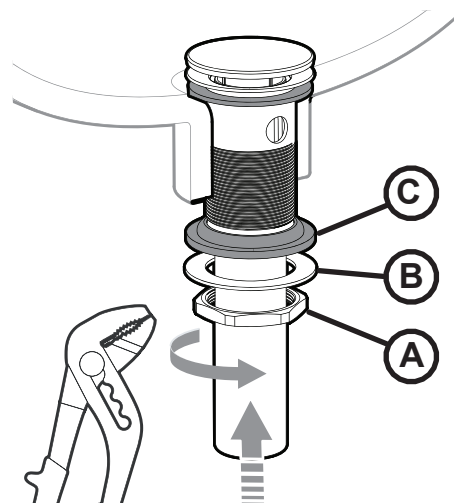
POSITION DRAIN

- 12 Apply included Upper Drain Seal (A) or Plumber's Putty to the underside of the Upper Flange. Insert Drain Assembly into drain hole of sink from above.



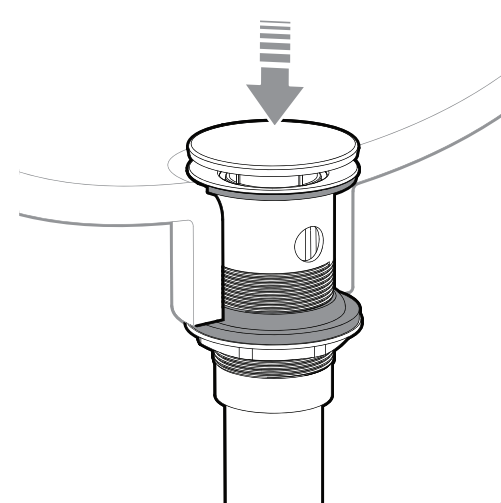
SECURE DRAIN

- 13 From below, reinstall Sealing Washer (C), Metal Washer (B), and secure with Mounting Nut (A). Tighten with Slip Joint Pliers. Take care to not over-tighten connection.



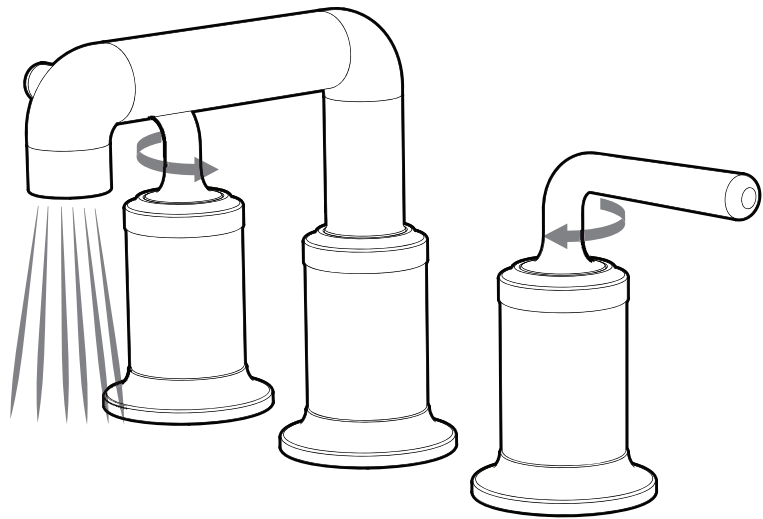
TEST DRAIN

- 14 Test Drain operation by pressing down on Stopper to open/close Drain.



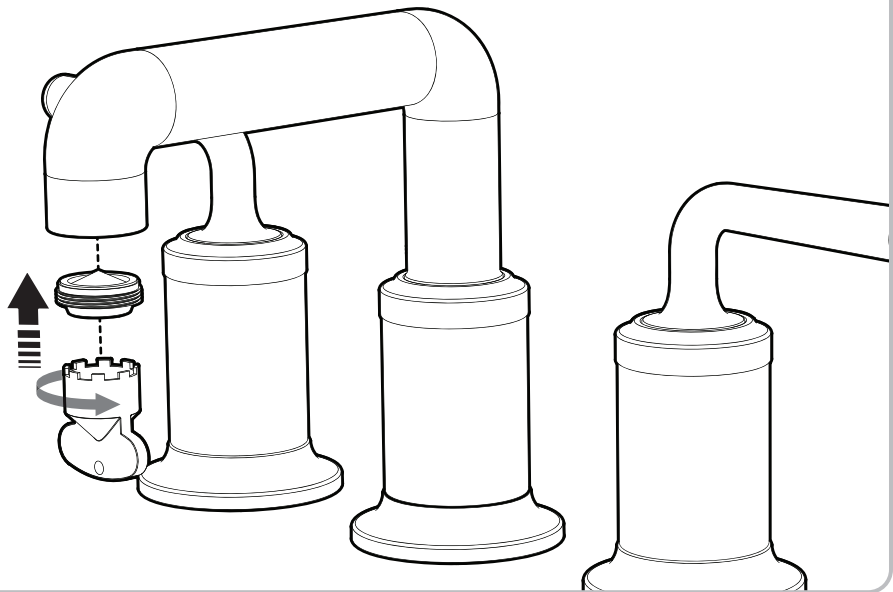
FLUSH SYSTEM AND CHECK FOR LEAKS

15 Turn on water supplies and flush both COLD and HOT cartridges for one minute, while checking for leaks. Return Handles to closed position when complete.

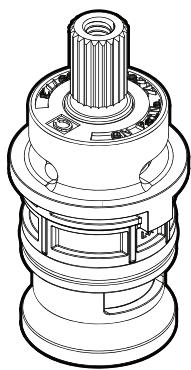


REINSTALL AERATOR

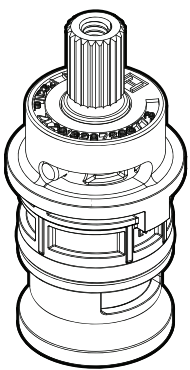
16 Reinstall Aerator to Faucet Spout using the included Aerator Wrench.



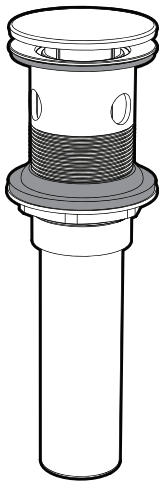
REPAIR PARTS



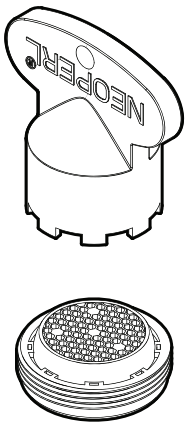
RPG05-0890
COLD CARTRIDGE



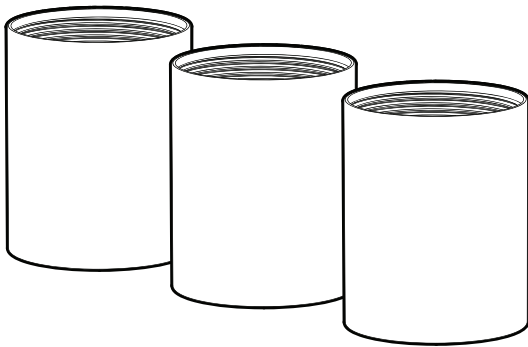
RPG05-0889
HOT CARTRIDGE



S-3480-XX
DRAIN ASSEMBLY
(XX = FINISH)



RPG05-122241
1.2 GPM AERATOR AND WRENCH



A-WSF-XX
FINISH SLEEVES (3)
(XX = FINISH)

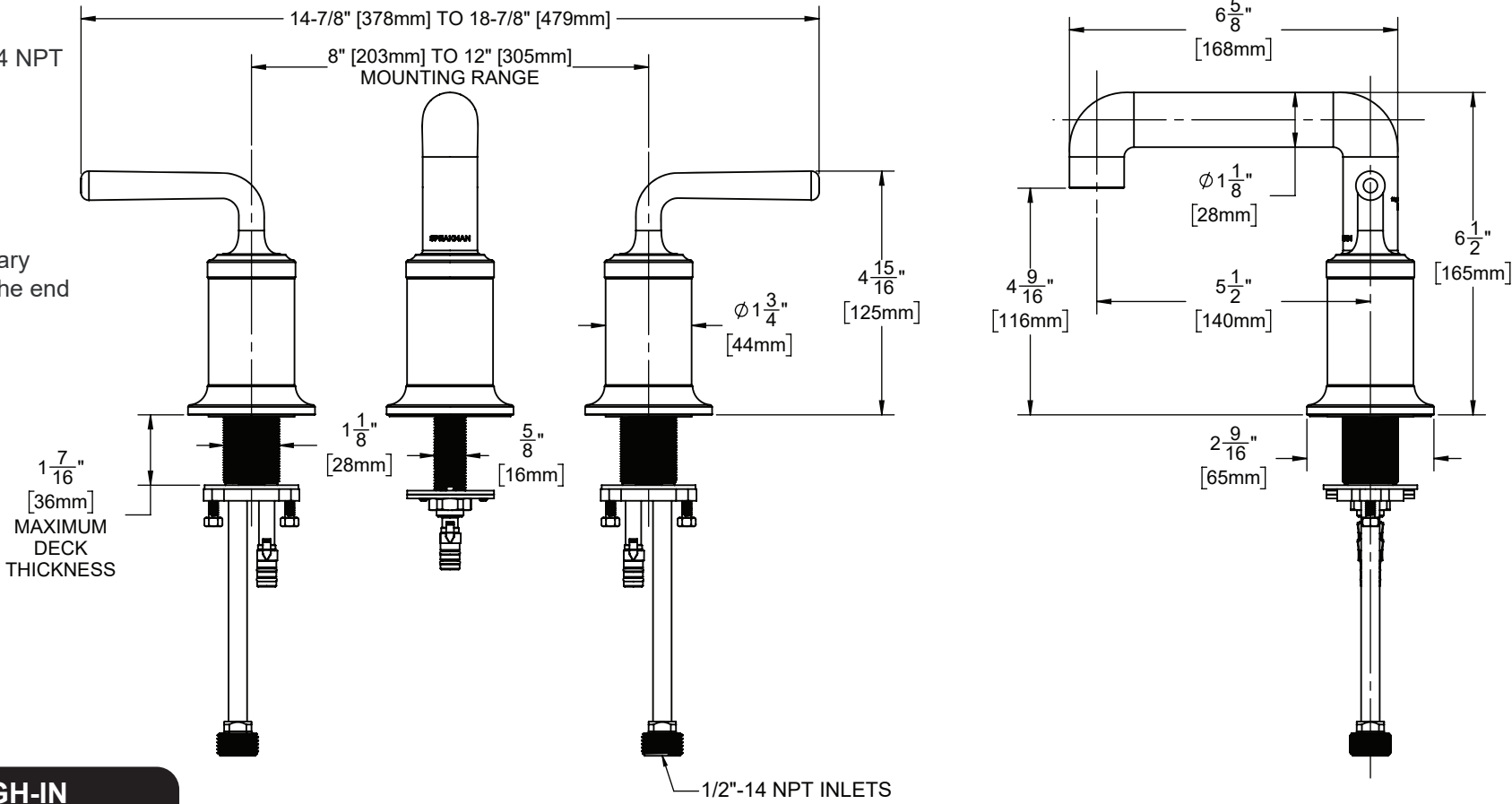
ROUGH-IN DIAGRAM

CONNECTIONS

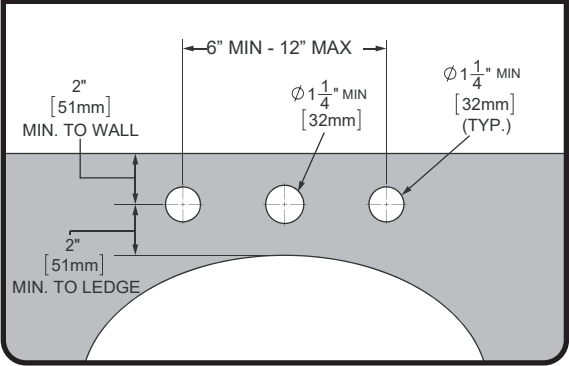
Inlet Connections are 1/2"-14 NPT

NOTES

Contractor to supply necessary connections to the inlets of the end bodies.



LAVATORY ROUGH-IN



DIMENSIONS SUBJECT TO CHANGE WITHOUT NOTICE.