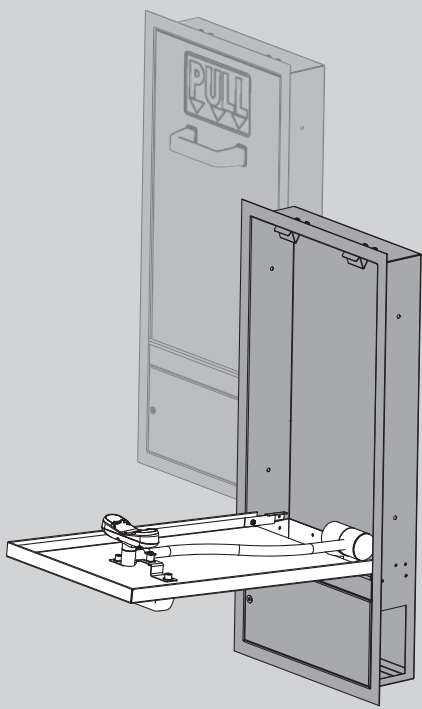


INSTRUCTIONS FOR MODELS

SE-575-DP
WALL MOUNTED SWING
DOWN LABORATORY
EYE WASH



NEED HELP?

For additional assistance or service please contact:

SPEAKMAN® Company
400 Anchor Mill Road
New Castle, DE 19720

800-537-2107

customerservice@speakman.com

www.speakman.com

92-SE-575-DP-06



IMPORTANT



- Do not over-tighten any connections or damage may occur.
- Be sure to read instructions thoroughly before beginning installation.
- This unit should be connected to an uninterrupted source of potable water, with a minimum flowing pressure of 30 PSI and a maximum static pressure of 125 PSI
- Note: All units meet existing ANSI Z358.1 Standards and OSHA Rules. Product improvements may cause specification and dimensional changes without notice.

SAFETY TIPS

Be sure to wear eye protection and follow suggested guidelines for proper use of tools.

MAINTENANCE

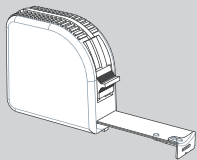
The valve, eye wash spray heads, and O-rings are the only portions of the unit that may require maintenance. Should you need parts to repair this unit, please reference the parts within this document for the correct part required. Before any maintenance is done, **be sure to shut the water supply off**

WARRANTY

Additional warranty information can be found at:
www.speakman.com

TOOLS AND SUPPLIES

Measuring
Tape



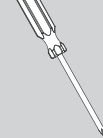
Keyhole
Saw



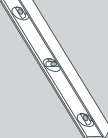
Pencil



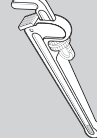
Phillips
Screwdriver



Level

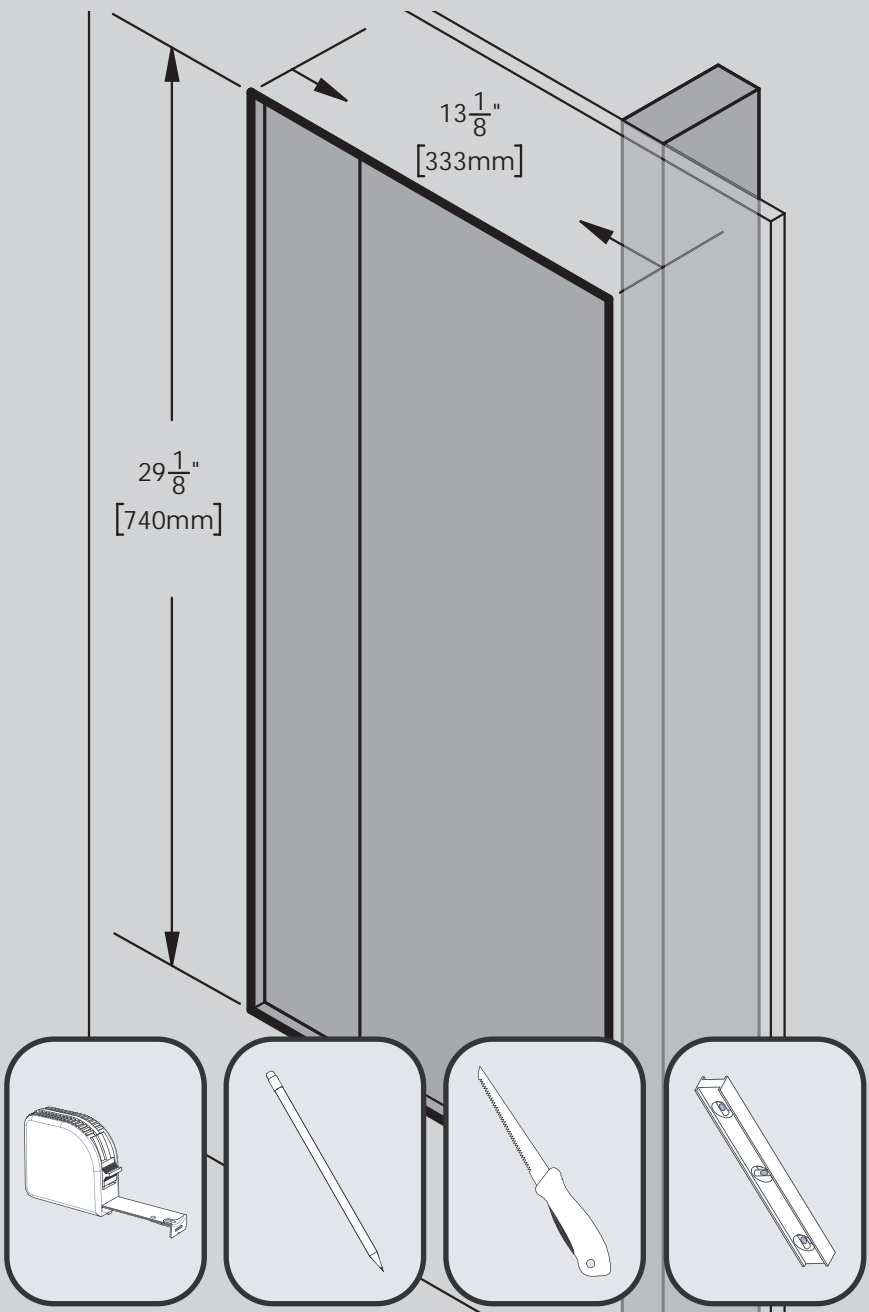


Pipe
Wrench



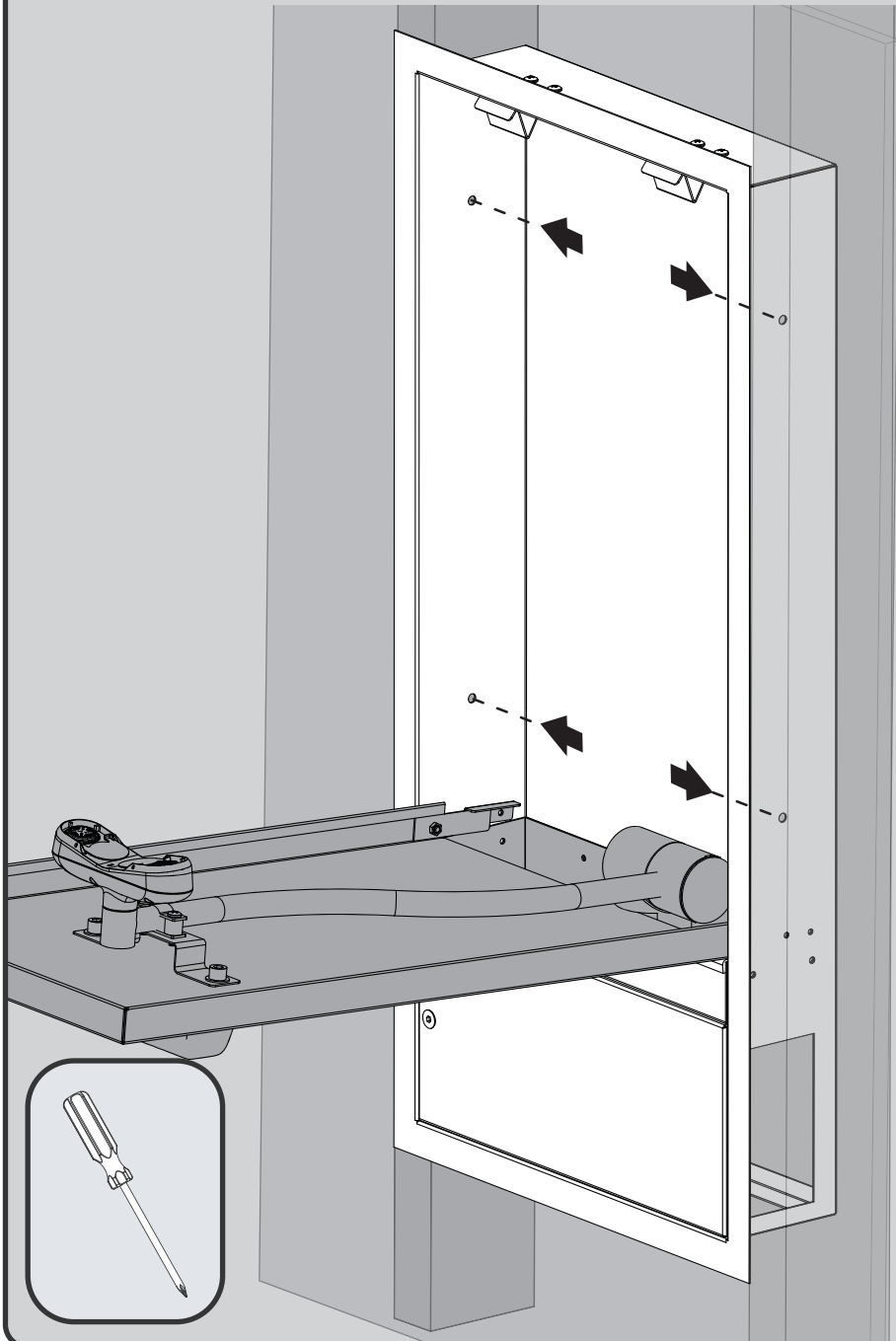
1

Review Rough In drawing and determine mounting location. Once desired location is known, measure the back portion of cabinet that will be recessed in wall and cut rough opening in wall. Ensure mounting location and mounting hardware (supplied by installer) is capable of supporting the product in use.



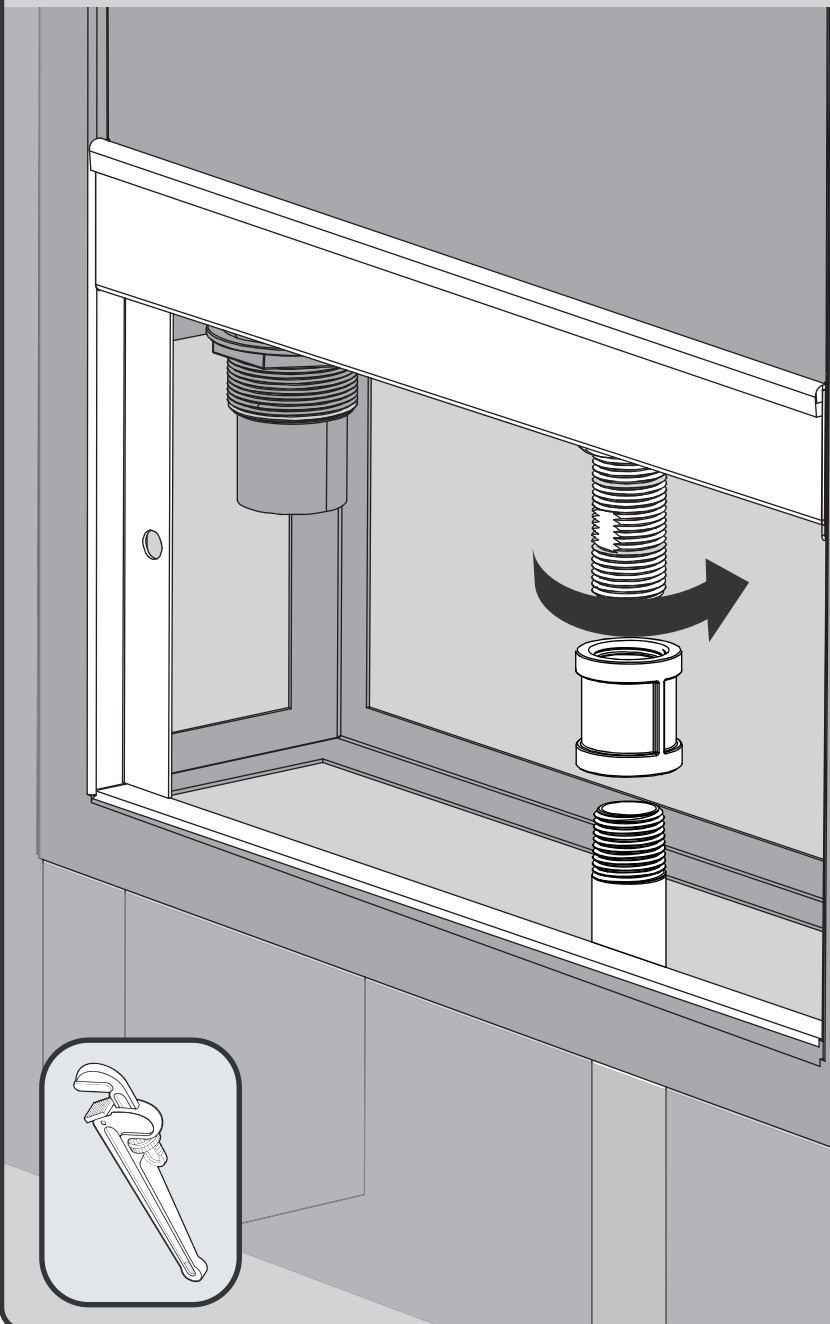
2

Ensure unit is level, and use appropriate mounting hardware (4) to secure unit to support brackets (supplied by installer). Ensure alignment on plumbing connection is positioned into the 1/4" hole.



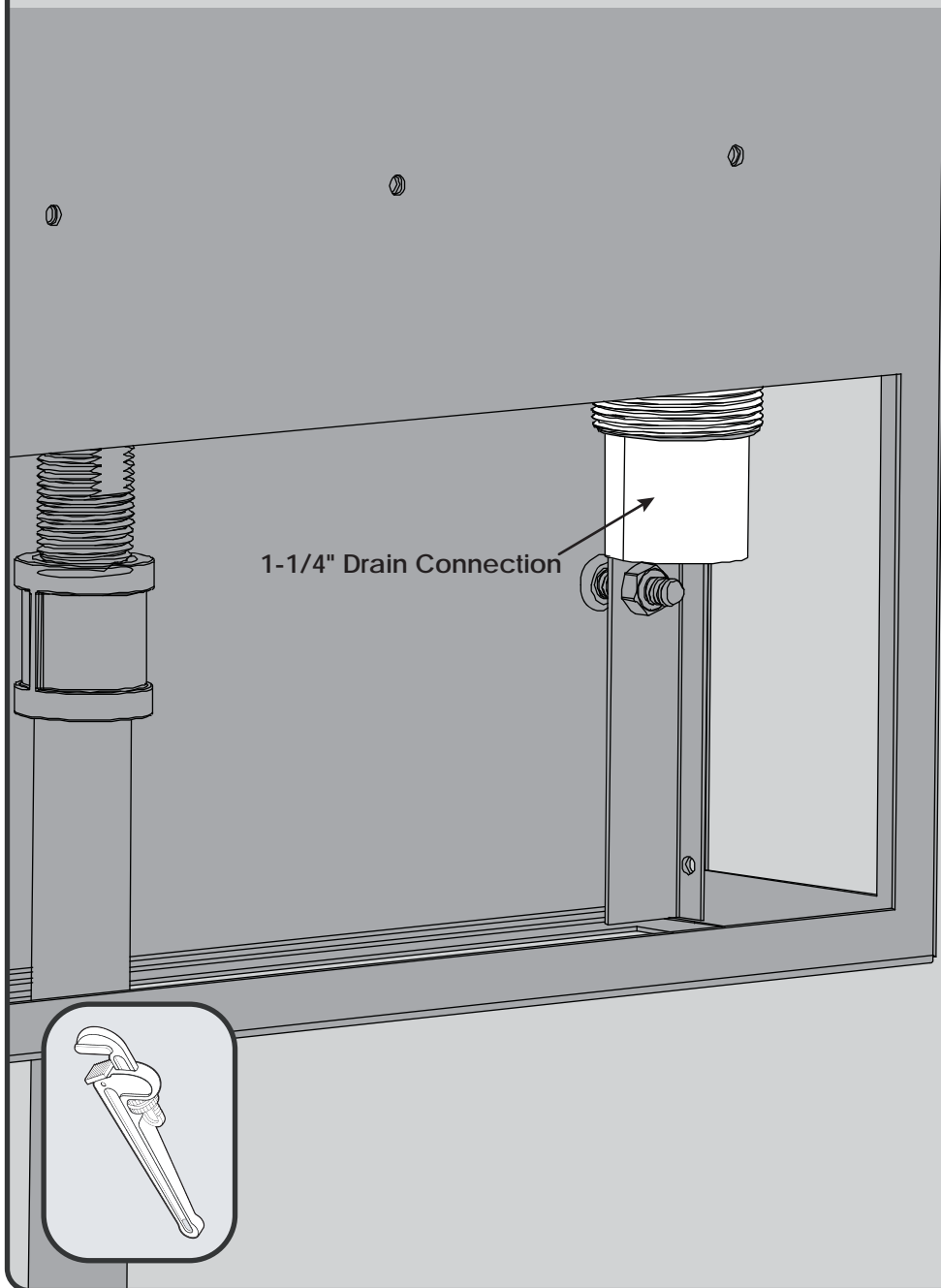
3

Open lower access panel of cabinet. Install connection to inlet of Swing Activated Valve. Wrench tighten.



4

Make appropriate drainage connections in compliance with local and/or national plumbing codes.

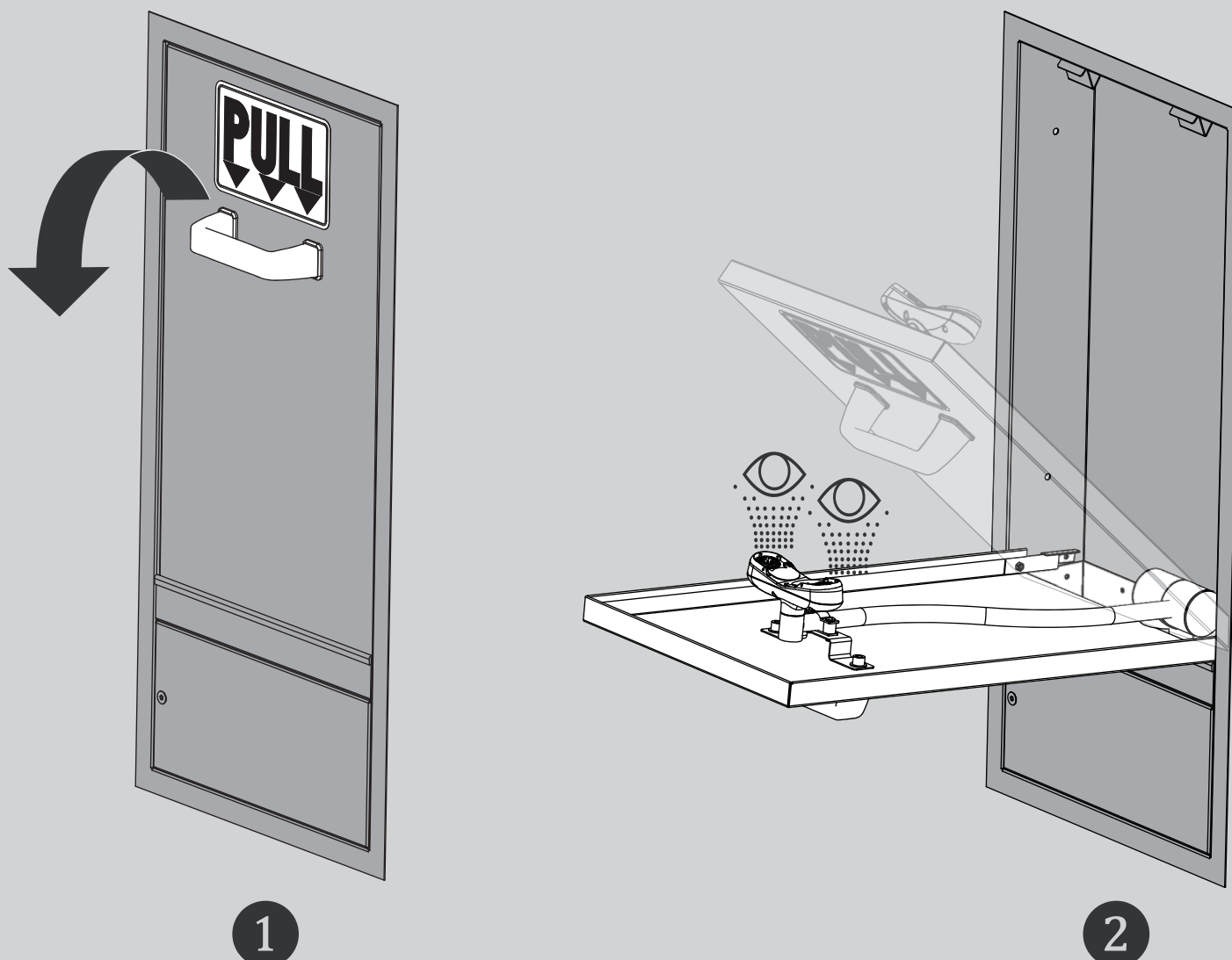


ACTIVATION AND TESTING

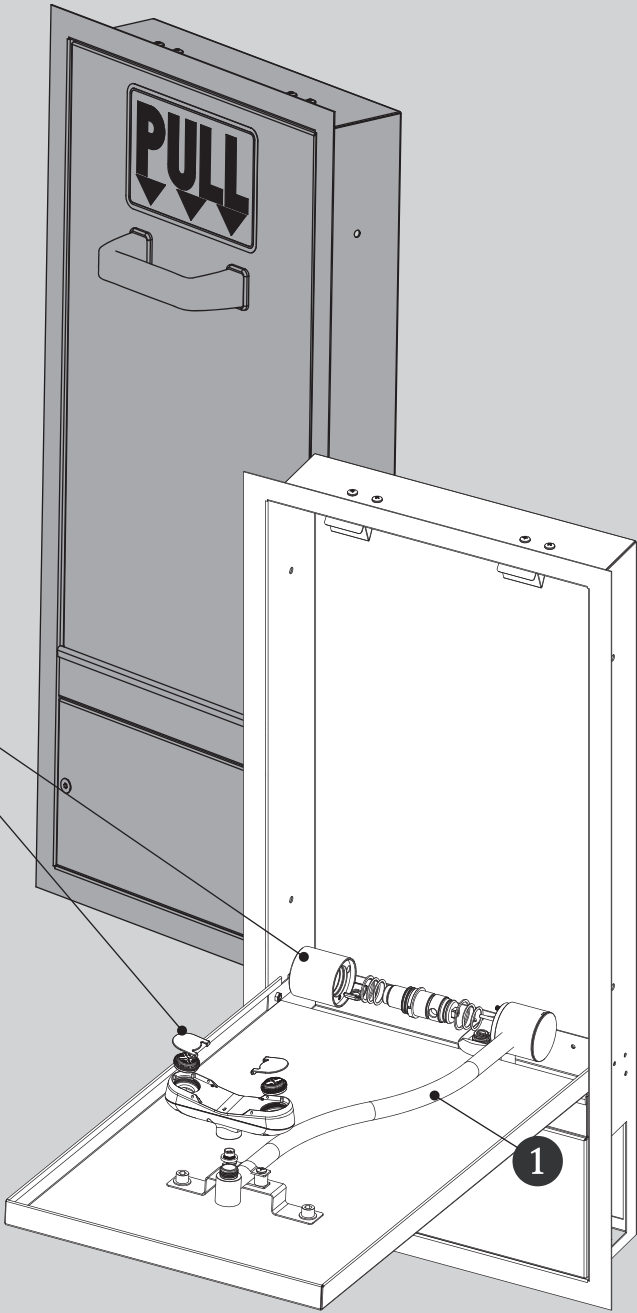
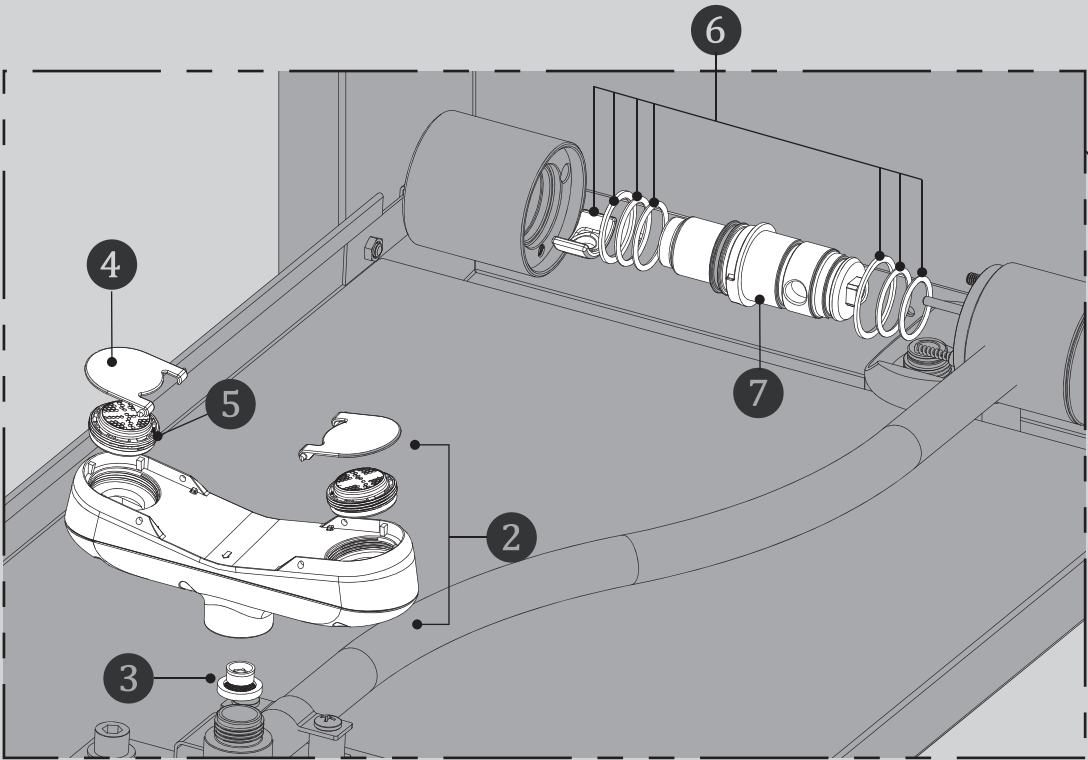
The **Eye Wash** is activated by pulling the handle on the eye wash drain pan down to the open position (1). Once the unit is activated, water will discharge from the spray outlets (2) until the eye wash spray heads are manually pushed back to the vertical off position.

TESTING PROGRAM

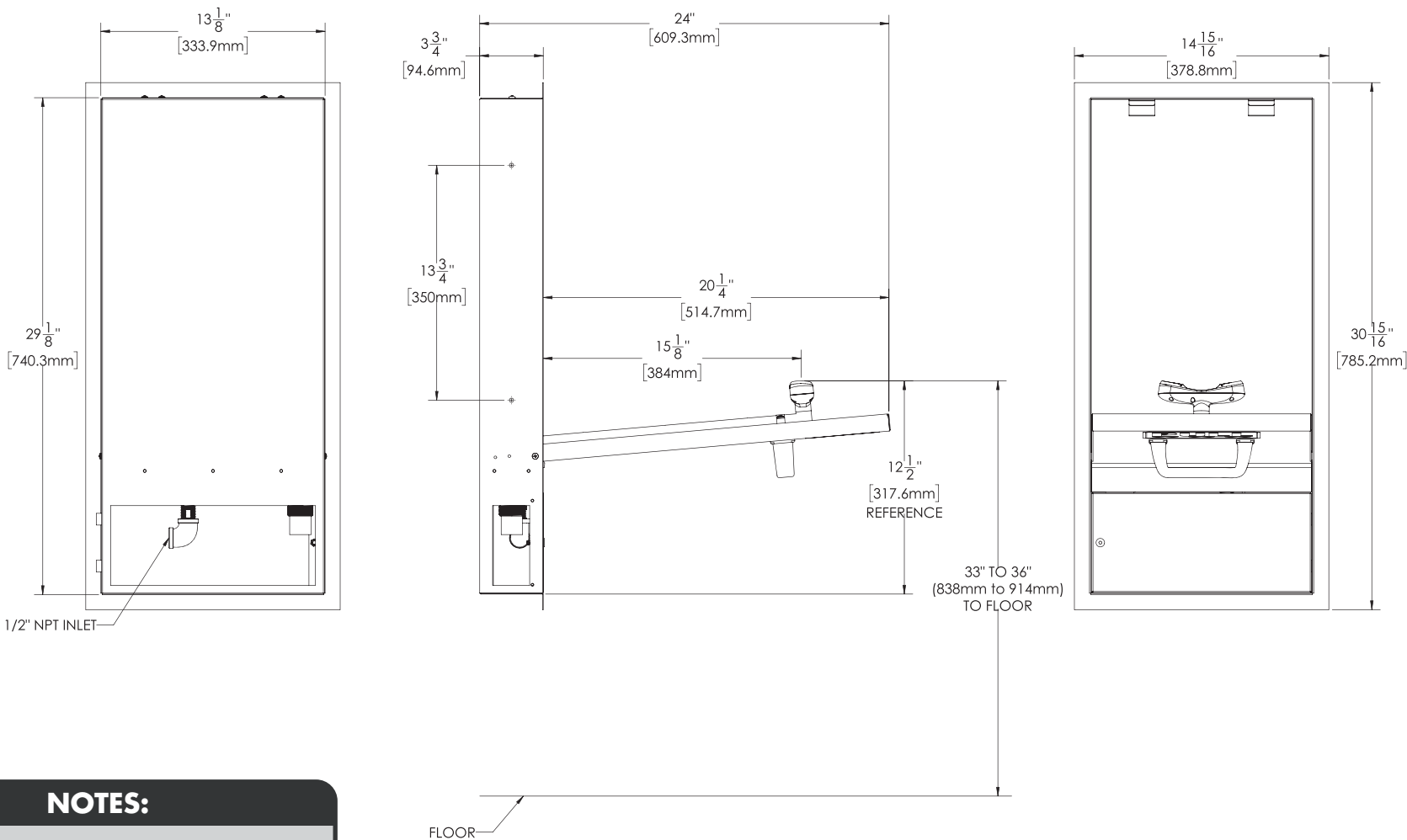
The American National Standards Institute (ANSI) states that all safety emergency equipment shall be activated on a weekly basis to flush the line and verify proper operation. Speakman Company furnishes a testing record tag (91-0635) with each unit. On this tag the date of inspection and the inspector's initials should be noted.



ITEM NO.	PART NO.	DESCRIPTION
1	SE-575-DP	CABINET MOUNTED SWING ACTIVATED VALVE*
2	RPG05-104024	SPRAY HEAD ASSEMBLY
3	RPG05-104029	FLOW CONTROL AND SCREEN
4	RPG05-104025	SPRAY HEAD DUST CAP (QTY 2)
5	RPG21-0196	AERATOR (QTY 2)
6	RPG45-104026	SEALS AND SLIP RINGS
7	RPG05-104027	VALVE SPINDLE



SE-575-DP ROUGH-IN DIAGRAM



NOTES:

COMPLIANCE:

ANSI/ISEA Z358.1

CONNECTIONS:

- Eye Wash
Inlet: 1/2" NPT FEMALE

Installer to supply necessary inlet connections.

FLOW DATA:

EYE WASH:

FLOW PRESSURE PSI (BAR)	30 (2.07)
FLOW RATE GPM (LPM)	2.4 (9.08)