

Optimus® Laboratory Recessed Wall-Mounted Pull Down Eyewash

FEATURES:

- Wall-mounted fully recessed cabinet
- 16 in. arm
- (2) Aerated Optimus spray heads with integrated dust caps
- Brass, chrome-plated valve
- Swing activated
- ½ in. NPT female inlet
- Stainless Steel with satin finish cabinet
- 2.4 gpm @ 30 psi
- Universal emergency sign included

STOCK FINISHES:



PC

Cabinet is brushed stainless steel. Swing down valve is chrome.

OPTIONS:

- ILS: In-line strainer for 1/2" IPS piping
- PT: P-Trap

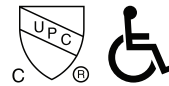
STANDARDS:

- ANSI/ISEA Z358.1 certified

WARRANTY:

Visit www.speakman.com for full product warranty information

- 3 Year Limited Warranty (commercial)



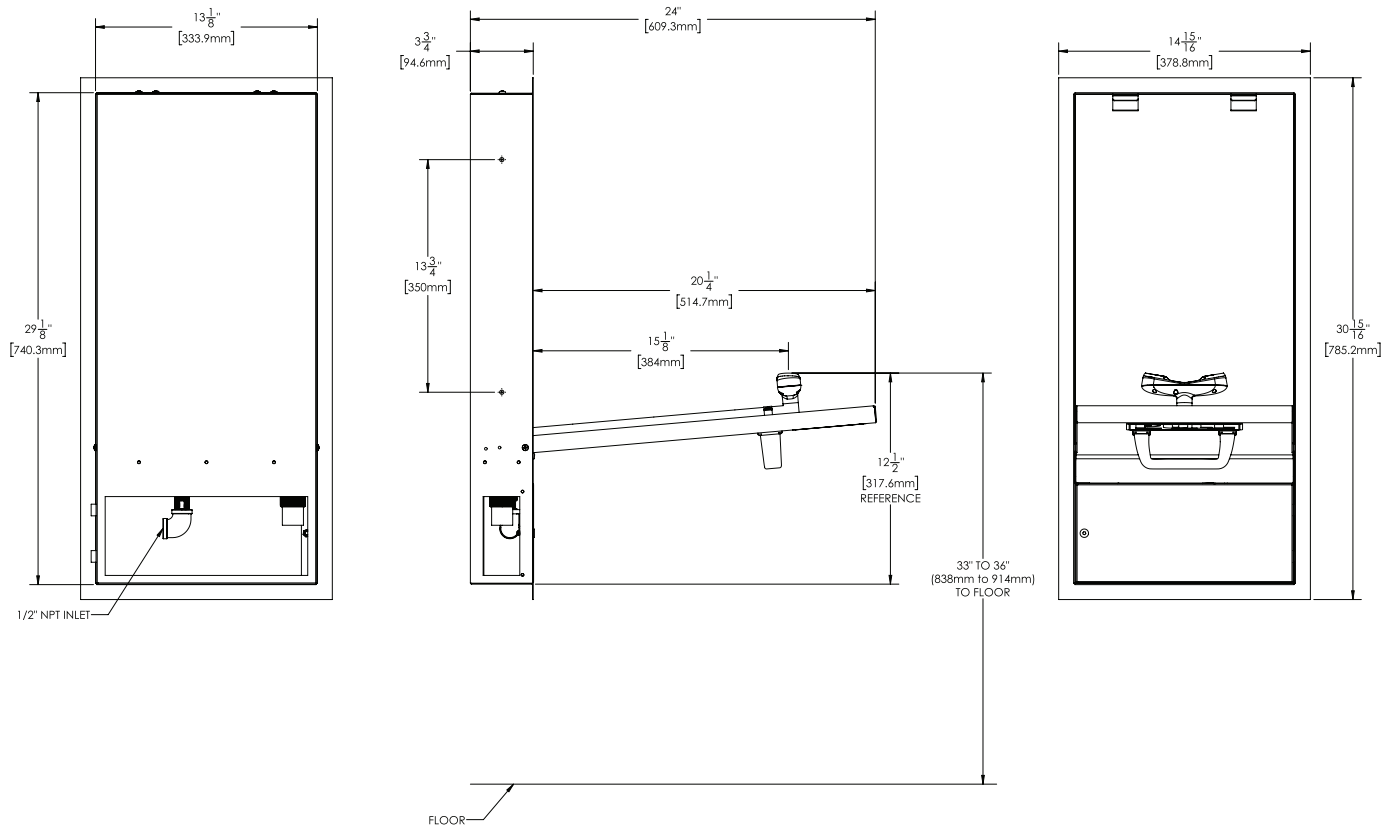
Information continues on next page

All dimensions are in inches (millimeters) unless otherwise specified and are subject to change without notice.

Architect/Engineer Approval Space:

P: 800-537-2107
F: 800-977-2747
W: WWW.SPEAKMAN.COM
R: 02-NOVEMBER 2019

Optimus® Laboratory Recessed Wall-Mounted Pull Down Eyewash



All dimensions are in inches (millimeters) unless otherwise specified and are subject to change without notice.

Architect/Engineer Approval Space:

P: 800-537-2107
 F: 800-977-2747
 W: WWW.SPEAKMAN.COM
 R: 02-NOVEMBER 2019