

Neo™ EasyInstall Universal Shower Combination

MODELS:

- SLV-1010-UNI: 1.75 GPM (6.6 L/min) Flow Rate Shower Head
- SLV-1010-UNI-E2: 2.0 GPM (7.6 L/min) Flow Rate Shower Head

FEATURES:

- CPT-1000-UNI: Universal Shower Valve Trim
- S-5000-E175: 1.75 GPM (6.6 L/min) Flow Rate Shower Neo Exhilaration 5 Function Shower Head
- S-5000-E2: 2.0 GPM (7.6 L/min) Flow Rate Shower Head Neo Exhilaration 5 Function Shower Head used in SLV-1010-UNI-E2 Model.
- S-2540: Shower Arm and Flange

VALVE OPTIONS:

- Retrofittable to:
 - Kohler® Rite-Temp® K-304-KS valve
 - Moen® PosiTemp® 62370 valve
 - Delta® R10000-UNWS valve
 - Symmons® 46-2-X-BODY Temptrol® valve
 - Pfister JX8/OX8 Valve (Add-On Kit RPG10-0113)

ADD-ON:

- RPG10-0113: Pfister JX8/OX8 valve installation kit

STOCK FINISHES:



PC BN MB

STANDARDS:

- ADA compliant
- WaterSense: S-5000-E175 & S-5000-E2

WARRANTY:

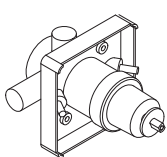
Visit www.speakman.com for full product warranty information

- See Speakman.com For Warranty Information

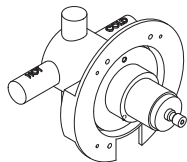


Retrofits to:

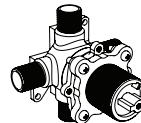
Information continues on next page



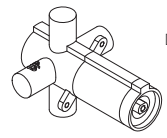
MOEN® Posi-Temp®
2510
2520
2570
2580
2590



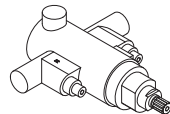
KOHLER® Rite-Temp®
K-304-CS-NA
K-304-CX-NA
K-304-PS-NA
K-304-PX-NA
K-304-US-NA
K-304-UX-NA
K-304-K-NA
K-304-KS-NA



PFISTER Valve
JX8 OX8



DELTA® MultiChoice®
R10000-UNBX
R10000-UNBXH F
R10000-UNWS
R10000-UN
R10000-UNWSHF

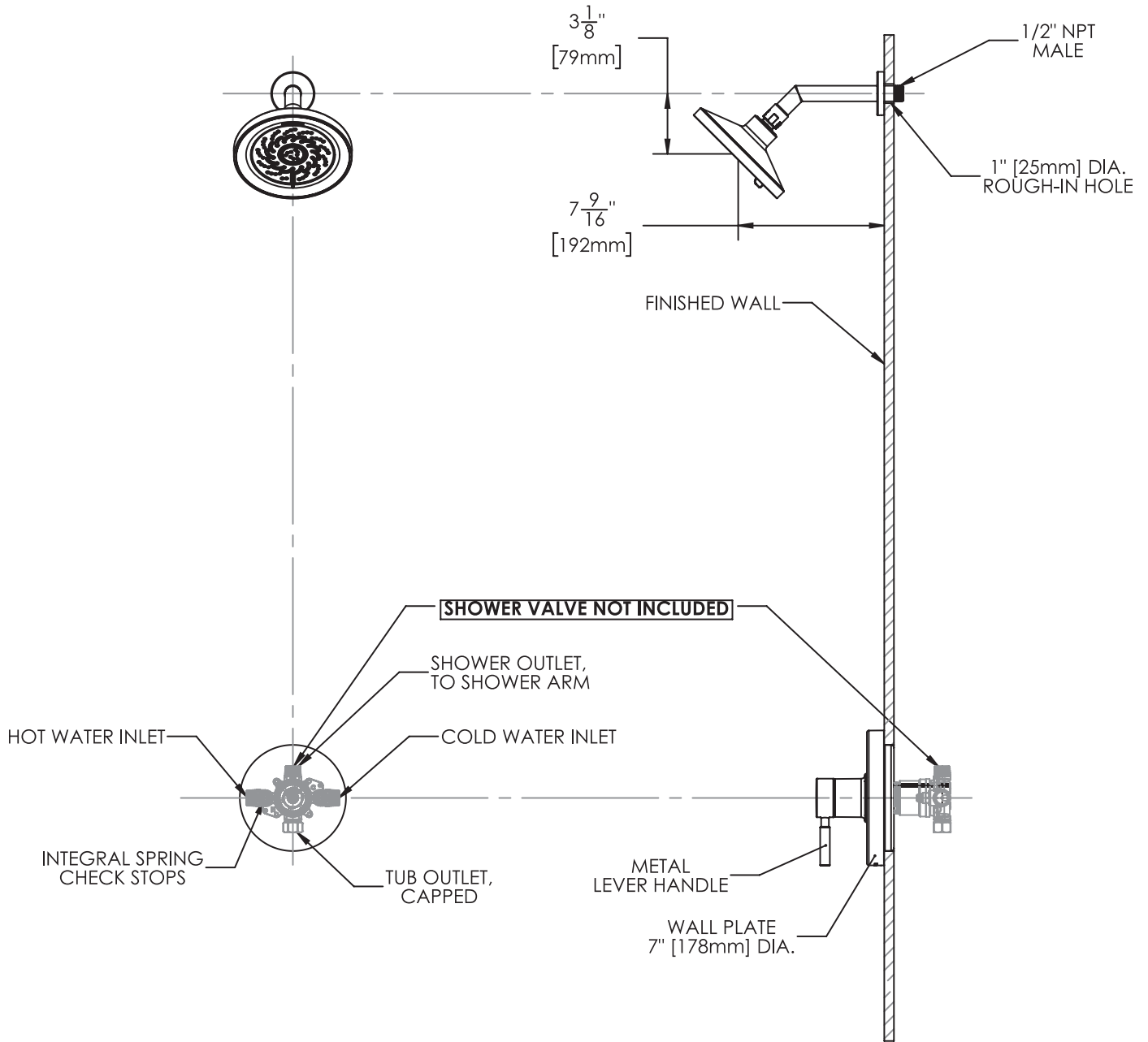


SYMMONS® Temptrol®
4000-BODY
4000-X-BODY
46-2-X-BODY

Architect/Engineer Approval Space:

P: 800-537-2107
F: 800-977-2747
W: WWW.SPEAKMAN.COM
R: 03-DECEMBER 2023

Neo™ EasyInstall Universal Shower Combination



1. All dimensions are in inches (millimeters) unless otherwise specified and are subject to change without notice. 2. All inlets and outlets are 1/2" female copper sweat and 1/2" male NPT unless otherwise specified. 3. For ADA mounting locations consult ADAAG, ANSI A117.1 or state regulations.

Architect/Engineer Approval Space:

P: 800-537-2107
 F: 800-977-2747
 W: WWW.SPEAKMAN.COM
 R: 03-DECEMBER 2023