

Neo® Trim and Shower Package (Valve not included)

MODELS:

- SLV-1040: VS-3010 2.5 GPM (9.5 L/min) Flow Rate Hand Shower
- SLV-1040-E175: VS-3010 1.75 GPM (6.6 L/min) Flow Rate Hand Shower
- SLV-1040-E2: VS-3010 2.0 GPM (7.6 L/min) Flow Rate Hand Shower

FEATURES:

- CPT-1001: Shower Valve Trim
- VS-3010: 2.5 GPM (9.5 L/min) Flow Rate Hand Shower w/ 60 in. Hose
- VS-3010-E175: 1.75 GPM (6.6 L/min) Flow Rate Hand Shower w/ 60 in. Hose
- VS-3010-E2: 2.0 GPM (7.6 L/min) Flow Rate Hand Shower w/ 60 in. Hose
- VS-155: Supply Ell with Wall Flange
- VS-156: Pause/Trickle Adaptor
- SA-1002: Slide Bar

VALVE OPTIONS:

- CPV-PB: Pressure Balance Valve Sweat & Thread Connections
- CPV-PB-PXC: Pressure Balance Valve PEX F1807 Crimp Inlet Connections
- CPV-PB-PXE: Pressure Balance Valve PEX F1960 Cold-Expansion Inlet Connections
- CPV-T2: Thermostatic Valve Sweat & Thread Connections
- CPV-T2-PXC: Thermostatic Valve PEX F1807 Crimp Inlet Connections
- CPV-T2-PXE: Thermostatic Valve PEX F1960 Cold-Expansion Inlet Connections



STOCK FINISHES:



PC BN MB

STANDARDS:

- ASME A112.18.1/CSA B125.1 certified
- ADA compliant
- WaterSense: VS-3010-E2 and VS-3010-E175 certified to meet WaterSense

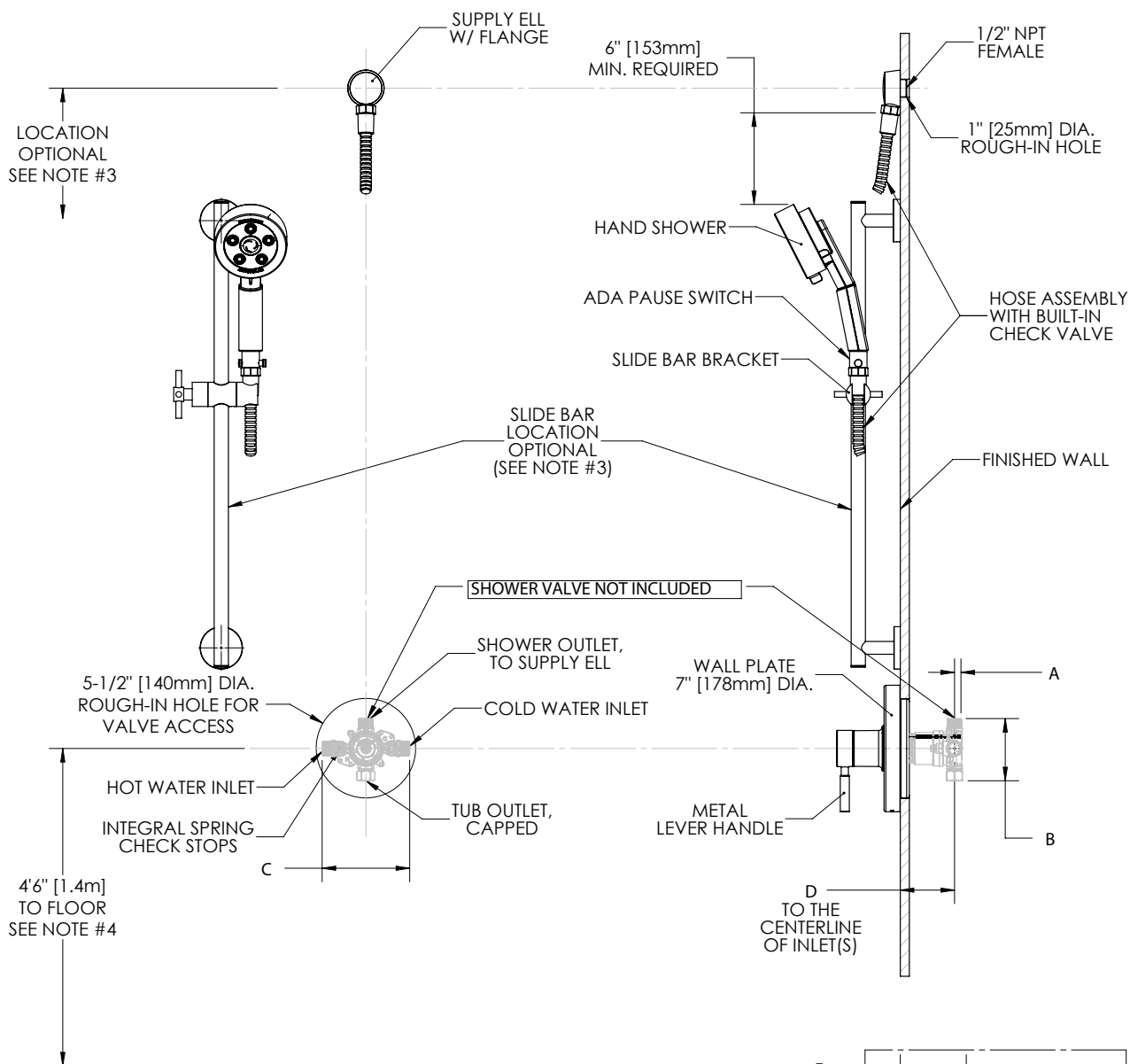
WARRANTY:

Visit www.speakman.com for full product warranty information

- See Speakman.com For Warranty Information

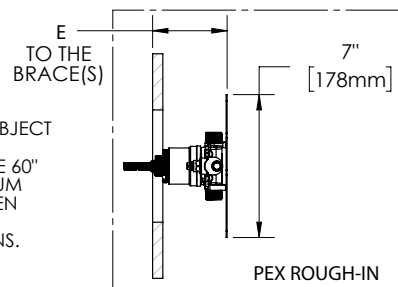
Information continues on next page

Neo® Trim and Shower Package (Valve not included)



NOTES:

1. ALL DIMENSIONS ARE IN INCHES [MILLIMETERS] UNLESS OTHERWISE SPECIFIED AND ARE SUBJECT TO CHANGE WITHOUT NOTICE.
2. THE LOCATIONS OF THE SLIDE BAR AND SUPPLY ELL ARE OPTIONAL, BUT RESTRICTED BY THE 60\"
3. FOR ADA MOUNTING LOCATIONS CONSULT ADAAG, ANSI A117.1, OR STATE REGULATIONS.



DIMENSION	CPV-PB	CPV-T2	CPV-PB-PXC	CPV-PB-PXE	CPV-T2-PXC	CPV-T2-PXE
A	7/16" (11mm)	1/2" (12mm)	7/16" (11mm)	7/16" (11mm)	1/2" (12mm)	1/2" (12mm)
B	3-5/16" (84mm)	3-1/2" (89mm)	3-5/16" (84mm)	3-5/16" (84mm)	3-1/2" (89mm)	3-1/2" (89mm)
C	4-13/16" (123mm)	5-7/8" (150mm)	4-13/16" (123mm)	4-13/16" (123mm)	5-7/8" (150mm)	5-7/8" (150mm)
D	2-1/2" (63mm) MIN TO 3-1/2" (89mm) MAX					
E			3-1/8" (79mm) MIN TO 4-1/8" (105mm) MAX	3-1/8" (79mm) MIN TO 4-1/8" (105mm) MAX	3-3/16" (81mm) MIN TO 4-3/16" (106mm) MAX	3-3/16" (81mm) MIN TO 4-3/16" (106mm) MAX