

Sentinel Mark II® Diverter Trim and Vandal Resistant Shower Combination (Valve not included)

FEATURES:

- CPT-3401: Diverter Shower Valve Trim
- S-2280-BJ: Vandal Resistant Wall-Mounted Shower Head

VALVE OPTIONS:

- CPV-PB-DV: Pressure Balance Diverter Valve
Sweat & Thread Connections
- CPV-PB-DV-PXC: Pressure Balance Diverter Valve
PEX F1807 Crimp Inlet Connections
- CPV-PB-DV-PXE: Pressure Balance Diverter Valve
PEX F1960 Cold-Expansion Inlet Connections
- CPV-T2-DV: Thermostatic Diverter Valve
Sweat & Thread Connections
- CPV-T2-DV-PXC: Thermostatic Diverter Valve
PEX F1807 Crimp Inlet Connections
- CPV-T2-DV-PXE: Thermostatic Diverter Valve
PEX F1960 Cold-Expansion Inlet Connections

STOCK FINISHES:



PC

STANDARDS:

- ASME A112.18.1/CSA B125.1 certified
- ADA compliant

WARRANTY:

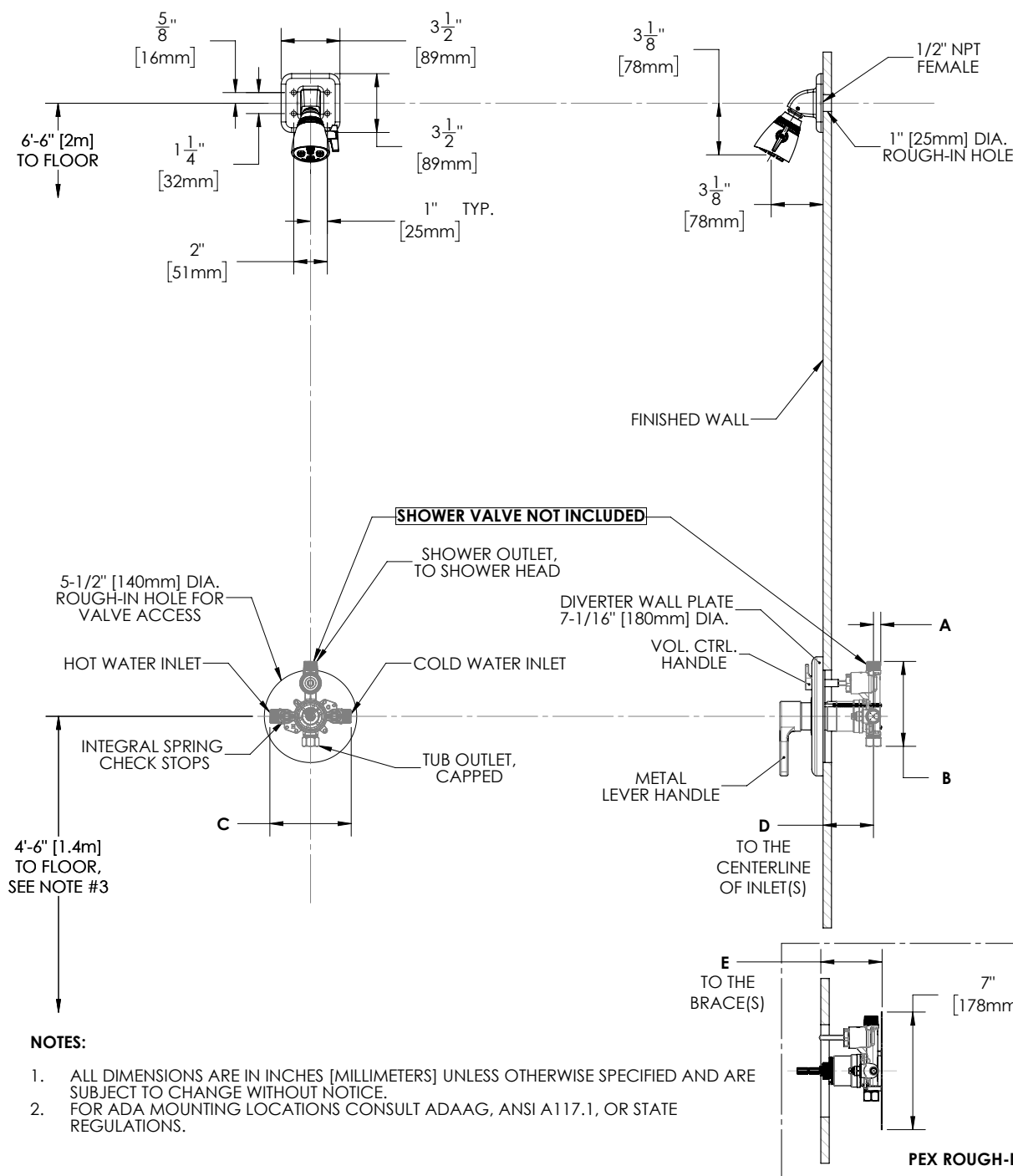
Visit www.speakman.com for full product warranty information

- See Speakman.com For Warranty Information



Information continues on next page

Sentinel Mark II® Diverter Trim and Vandal Resistant Shower Combination (Valve not included)



DIMENSION	CPV-PB-DV	CPV-T2-DV	CPV-PB-DV-PXC	CPV-PB-DV-PXE	CPV-T2-DV-PXC	CPV-T2-DV-PXE
A	7/16" (11mm)	9/16" (14mm)	7/16" (11mm)	7/16" (11mm)	9/16" (14mm)	9/16" (14mm)
B	4-15/16" (125mm)	5-1/16" (128mm)	4-15/16" (125mm)	4-15/16" (125mm)	5-1/16" (128mm)	5-1/16" (128mm)
C	4-13/16" (123mm)	5-7/8" (150mm)	4-13/16" (123mm)	4-13/16" (123mm)	5-7/8" (150mm)	5-7/8" (150mm)
D	2-1/2" (63mm) MIN TO 3-1/2" (89mm) MAX					
E			3-1/8" (79mm) MIN TO 4-1/8" (105mm) MAX	3-1/8" (79mm) MIN TO 4-1/8" (105mm) MAX	3-3/16" (81mm) MIN TO 4-3/16" (106mm) MAX	3-3/16" (81mm) MIN TO 4-3/16" (106mm) MAX