

Sensorflo Exposed Sensor Battery Urinal Flushometer 0.50 GPF

FEATURES:

- 0.50 GPF (1.0 Lpf) flush volume
- Battery powered (4x standard AA alkaline batteries, included)
- 300,000 cycles (4 years) battery
- Piston valve
- Yellow brass valve body material
- Top spud fixture connection
- 11 1/2" (292mm) rough-in Dimension
- 3/4"-14 NPSM spud coupling
- 3/4"-14 NPT supply pipe
- 3/4" sweat solder adapter with cover tube and escutcheon
- Manual override stem seal, piston cup seal washer, piston sealing washer, stop-body plunger seal, and tailpiece O-ring are molded from chloramine resistant rubber compound
- 2 to 3 second flush delay
- Low battery indicator: Light on sensor window flashes once per second when low, and twice per second when critically low
- Fixed volume bypass with no external adjustment
- Override button located on side of unit
- 3/4" NPT check-stop, adjustable with flat-tipped screwdriver
- Check-stop cap is secured with a set screw for vandal resistance
- Infrared sensor that detects movement 2 feet away and in a 15° downward vertical sweep



STANDARDS:

- ASSE 1037 certified
- WaterSense certified
- ADA compliant

OPERATING REQUIREMENTS:

- Operating Pressure: 20 to 80 PSI (138 to 552 kPa) Flowing
- Operating Temperature: 50 to 110 °F (10 to 43 °C)

FINISH:



PC

WARRANTY:

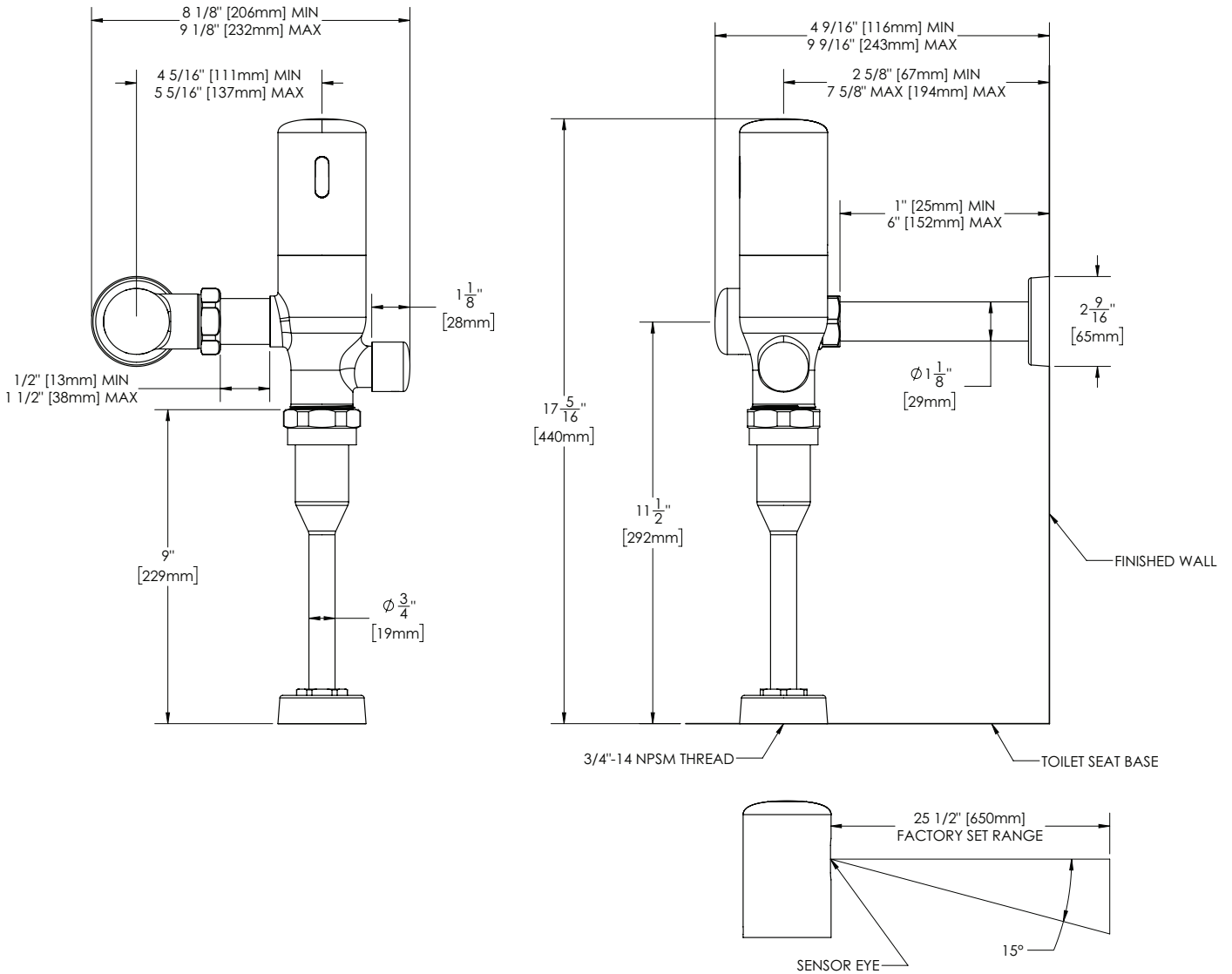
Visit www.speakman.com for full product warranty information

- 5 Year Limited Warranty (commercial)
- Limited Lifetime Warranty (residential)

Information continues on next page

1. All dimensions are in inches (millimeters) unless otherwise specified and are subject to change without notice.

Sensorflo Exposed Sensor Battery Urinal Flushometer 0.50 GPF



1. All dimensions are in inches (millimeters) unless otherwise specified and are subject to change without notice.

Architect/Engineer Approval Space:

P: 800-537-2107
 F: 800-977-2747
 W: WWW.SPEAKMAN.COM
 R: 02-SEPTEMBER 2021