

SPEAKMAN®

VS-3011

Installation, Maintenance & Operation Instructions ANYSTREAM® HAND-HELD SHOWER

DESCRIPTION

Speakman Polished chrome plated ANYSTREAM® S-3011 hand shower. Includes a five-foot-long hose and swivel ball bracket for shower arm mounting. Spray adjusting, 4" outer ring. 5 plunger nozzles resist scale build-up and provide 45 spray streams for a full body coverage pattern. Center core nozzle delivers a massage spray. Combination spray included. Water conserving pressure compensating AUTOFLO® device reduces flow to 2.5 GPM / 9.5 L/min maximum, to meet existing ASME A112.18.1 Standard. ½" NPT inlet.

SPECIFICATIONS

SUPPLY INLET: ½" NPT

FLOW RATE: 2.5 GPM / 9.5 L/min

FLOW CONTROL: VARIABLE

SHIPPING WEIGHT: 1.6 LBS.

OPTIONS:

BN	Brushed Nickel
VS-3011-E2	Low Flow Shower Head (2.0 GPM/ 7.6 L/min)
VS-3011-BN-E2	Low Flow Brushed Nickel Shower Head (2.0 GPM/ 7.6 L/min)

INSTALLATION

Screw the swivel arm bracket onto the outlet shower arm. Install rubber washers in the ends of the hose. Turning in a clockwise direction, thread the hose swivel onto the threaded end of the swivel arm bracket and the other hose end onto the hand held shower. **IMPORTANT: One end of the hose is marked with ribs and a paper tab indicating this end MUST connect to the bracket. If not installed correctly there will be restricted flow.** Hand tighten firmly all connections. Turn the water supply on and check for leaks.

OPERATION

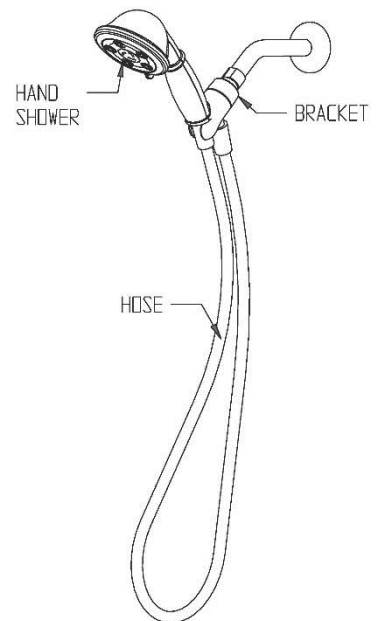
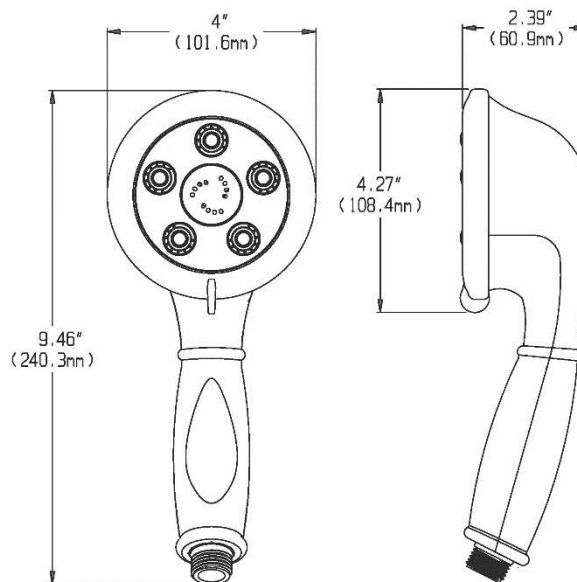
To adjust the spray pattern of the shower head, simply rotate the outer ring to the desired spray (Full-Body, Dual action or Massage). The outer ring can rotate 360°.

MAINTENANCE

The gleaming finish of your SPEAKMAN® hand shower can be cleaned by using mild soap and warm water. Dry immediately with a soft, clean cloth for best results. The flow control device limits water flow to 2.5 gallons per minute. The small orifices may become clogged with scale and other minerals found in potable water. To clean the flow regulator, simply remove the shower arm mount from the bent arm, pull out the rubber washer from the ball, dislodge the flow regulator and clean as necessary.

Product improvements may cause specification and dimensional changes without notice.

ROUGH-IN MEASUREMENTS



Note: Accessories shown.

SPEAKMAN®

VS-153-ADA

Installation

1. Hold the Grab/Slide bar against the wall in the chosen location. Using a pencil, mark the drill hole positions (4 in total) for the lower and upper mounting brackets. If using as a Grab bar, be sure to fasten securely to a wall stud. (Note: upper mounting bracket height is adjustable)
2. To mount the brackets, use a No. 10 (0.1935 inches/5.5 mm) masonry drill bit to make a hole approximately 1 3/8 inches (35 mm) deep. Push the plastic anchors (4 in total) into the drilled holes, unless your mounting to wall studs, where anchors can be omitted. (Note: plastic anchors provided may not be suitable for all types of wall construction, seek professional help if in doubt)
3. Fix upper mounting bracket and then the lower mounting bracket to the wall using the four (4) screws provided.
4. Push the bracket covers over the mounting brackets while paying close attention to cover orientation for proper placement.

Clean Grab/Slide bar regularly using a non-abrasive liquid bathroom cleaner.

